

GUANA



◆ **MASTERCRAFT.** ◆
BUILDER GROUP



COASTAL



CRAFTSMAN



FARMHOUSE

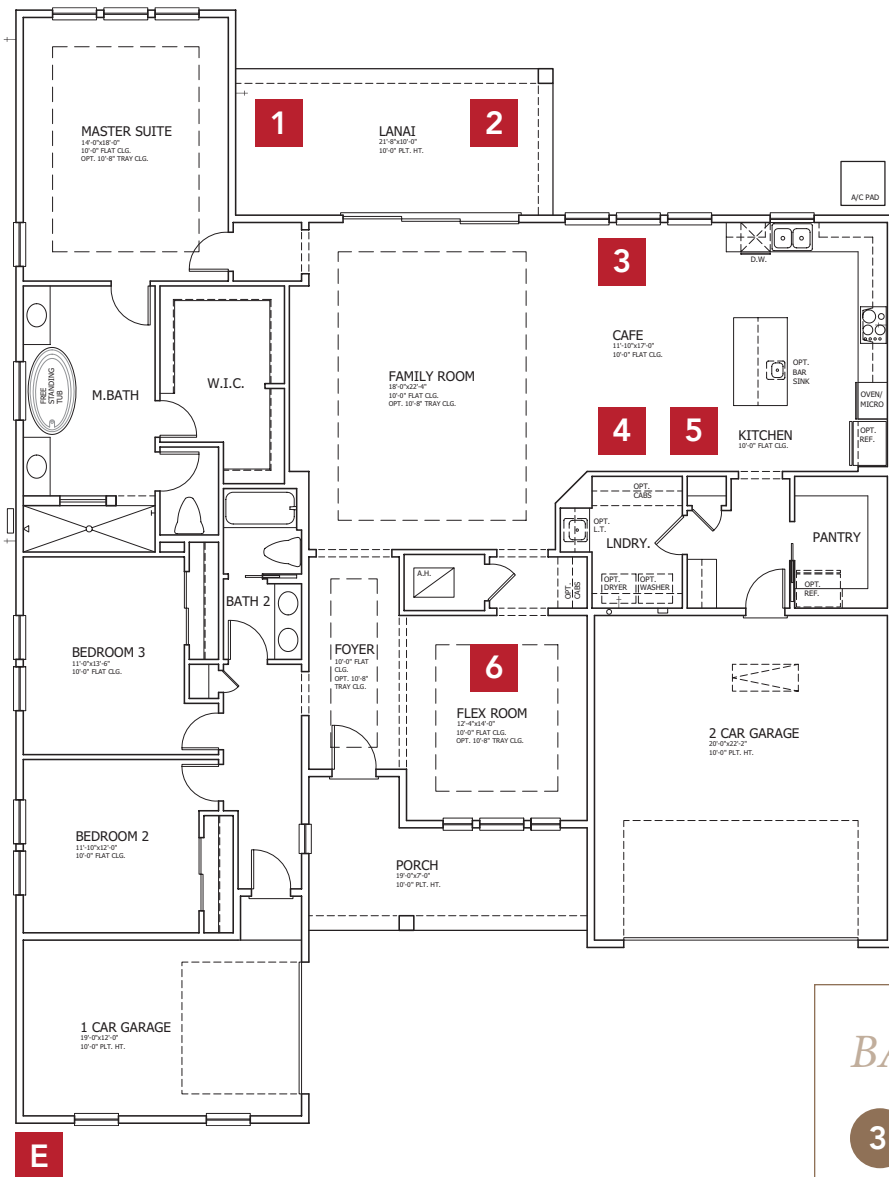


SPANISH

* Not all elevations may be offered in all communities. Please check with your Community New Home Consultant for availability.

GUANA COASTAL

FIRST FLOOR



BASE INFORMATION

3 BEDROOMS

2 BATHROOMS

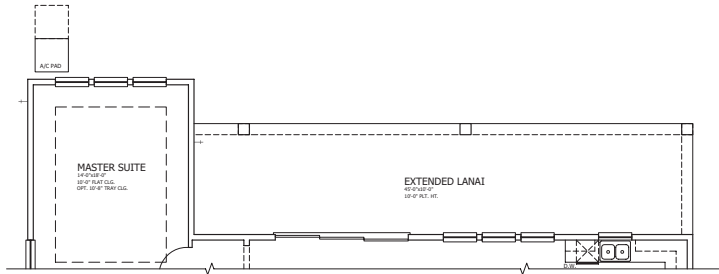
3 CAR GARAGE

2,540 SQUARE FEET

In the interest of continuous product improvements and to meet changing market conditions, MasterCraft Builder Group reserves the right to modify floor plans, exterior elevations, specifications, features, prices and product types without prior notice or obligation. Some features may vary from plan to plan. All plans, elevation renderings, and artist's conceptions are not necessarily to scale. All square footages are approximate. Window size, type and location may vary with each elevation.

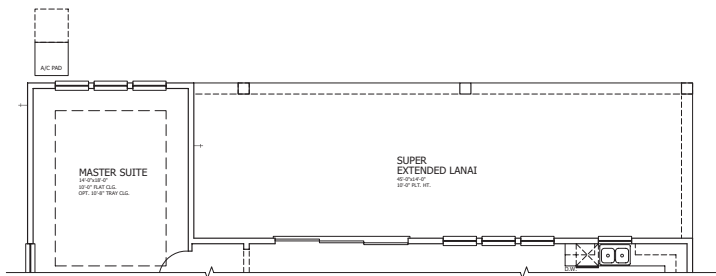
FLOOR PLAN OPTIONS

1 EXTENDED LANAI



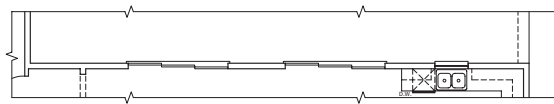
* Additional 450 square feet on lanai

2 SUPER EXTENDED LANAI

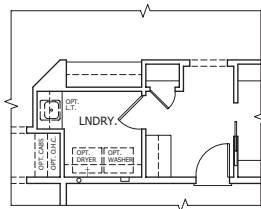


* Additional 630 square feet on lanai

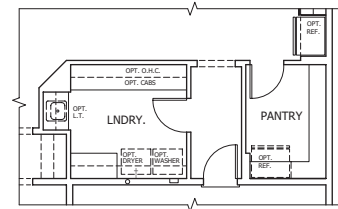
3 2ND SLIDING GLASS DOOR AT LANAI



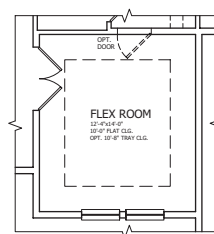
4 BAR AT CAFE WITH BONUS ROOM



5 FAMILY STUDIO WITH BONUS ROOM



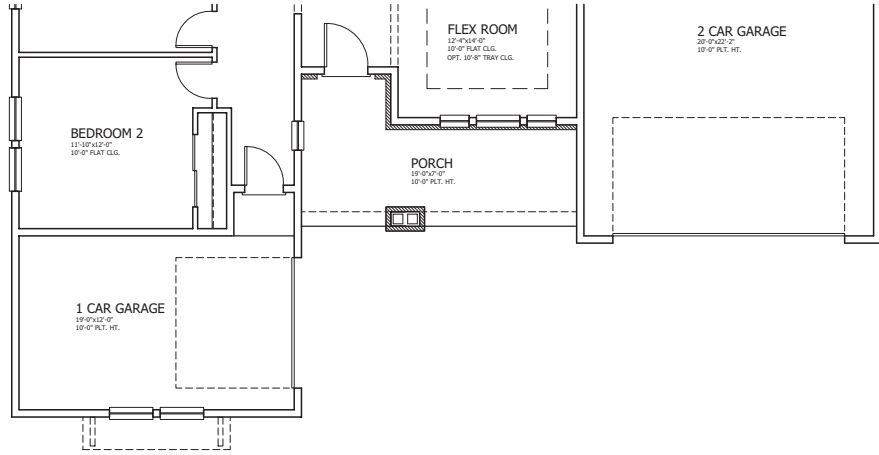
6 FRENCH DOOR AT FLEX ROOM



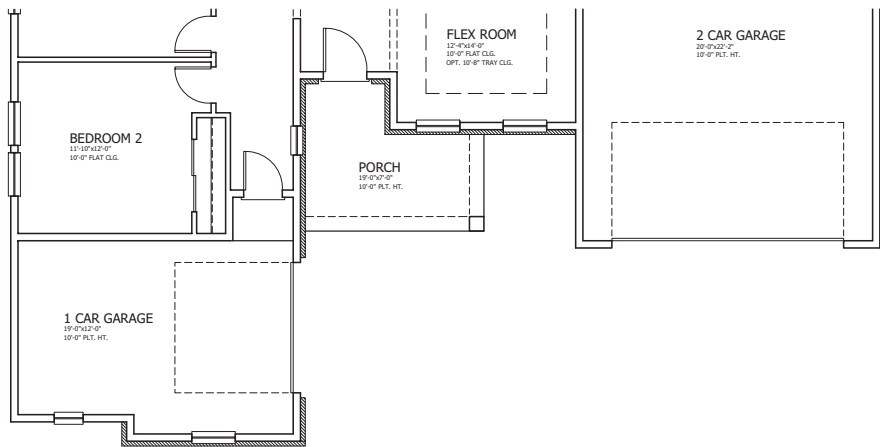
* All options are available for Guana and Guana with Bonus

OTHER ELEVATIONS

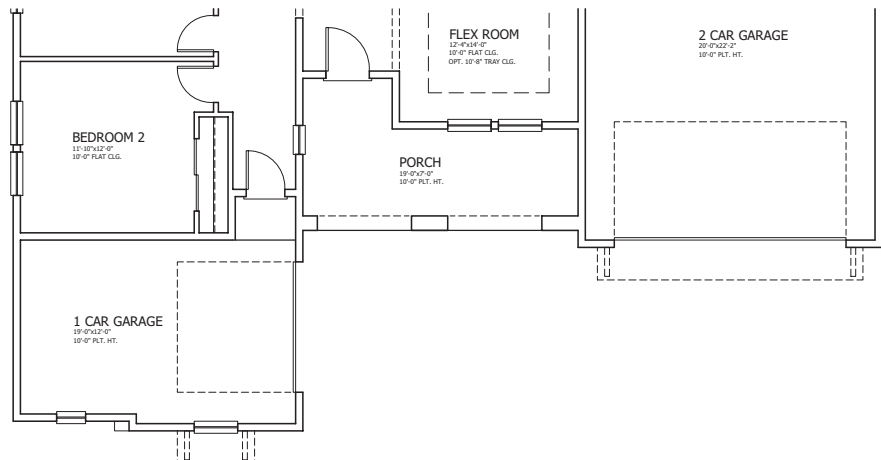
E CRAFTSMAN



E FARMHOUSE



E SPANISH



GUANA WITH BONUS



COASTAL WITH BONUS



CRAFTSMAN WITH BONUS



FARMHOUSE WITH BONUS



SPANISH WITH BONUS

* Not all elevations may be offered in all communities. Please check with your Community New Home Consultant for availability.

◆ **MASTERCRAFT** ◆
BUILDER GROUP