

ROBINSON



◆ **MASTERCRAFT.** ◆
BUILDER GROUP



COASTAL



CRAFTSMAN

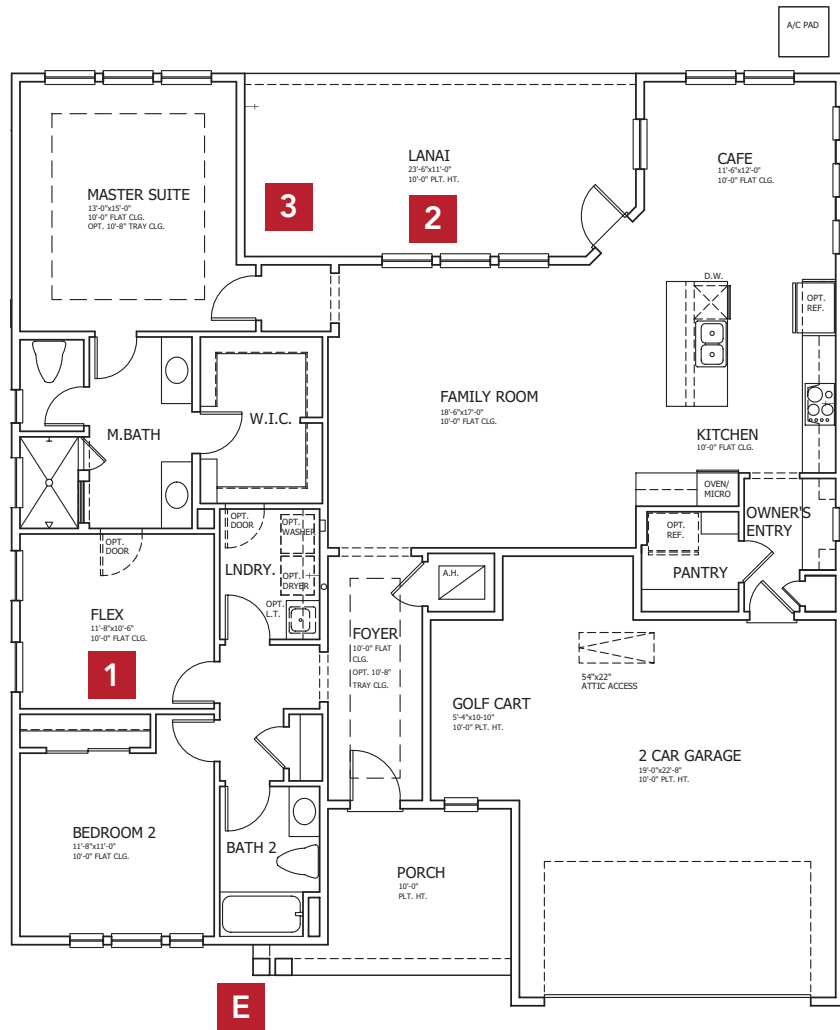


FARMHOUSE

* Not all elevations may be offered in all communities. Please check with your Community New Home Consultant for availability.

ROBINSON COASTAL

FIRST FLOOR



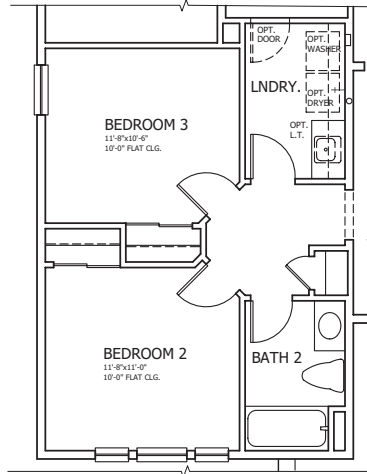
BASE INFORMATION

- 2** BEDROOMS
- 2** BATHROOMS
- 2** CAR GARAGE WITH GOLF CART BAY
- 1,798** SQUARE FEET

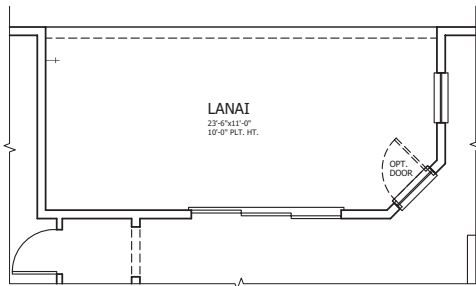
In the interest of continuous product improvements and to meet changing market conditions, MasterCraft Builder Group reserves the right to modify floor plans, exterior elevations, specifications, features, prices and product types without prior notice or obligation. Some features may vary from plan to plan. All plans, elevation renderings, and artist's conceptions are not necessarily to scale. All square footages are approximate. Window size, type and location may vary with each elevation.

FLOOR PLAN OPTIONS

1 BEDROOM 3

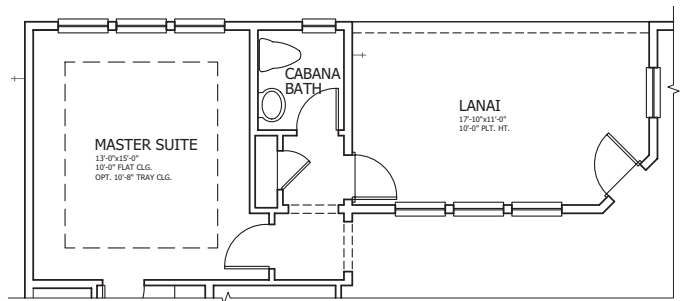


2 SLIDING GLASS DOOR AT FAMILY



* All options are available for Robinson with Bonus

3 CABANA BATH



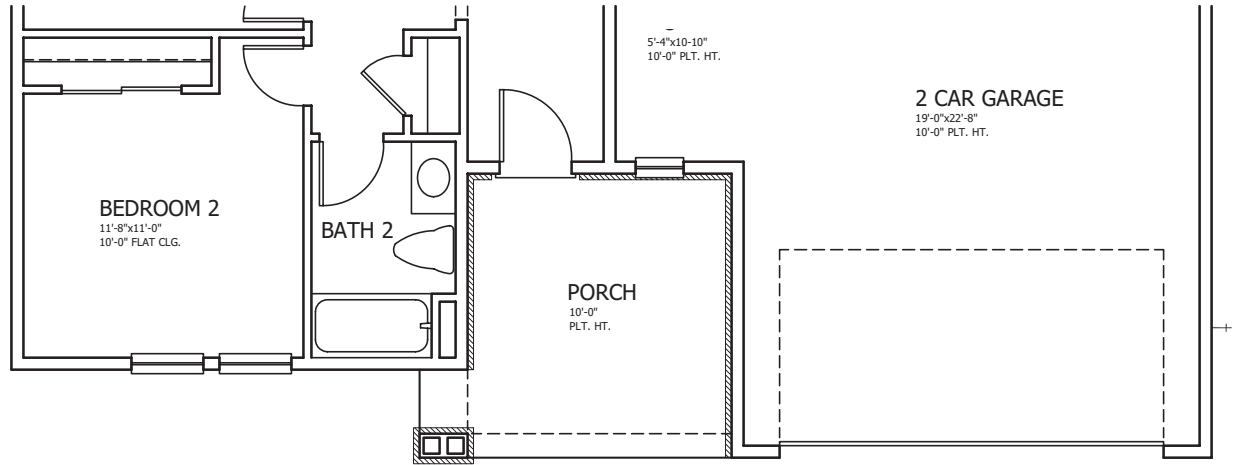
* Adds additional 62 square foot living space

BUILT BY CRAFTSMAN FINISHED BY YOU

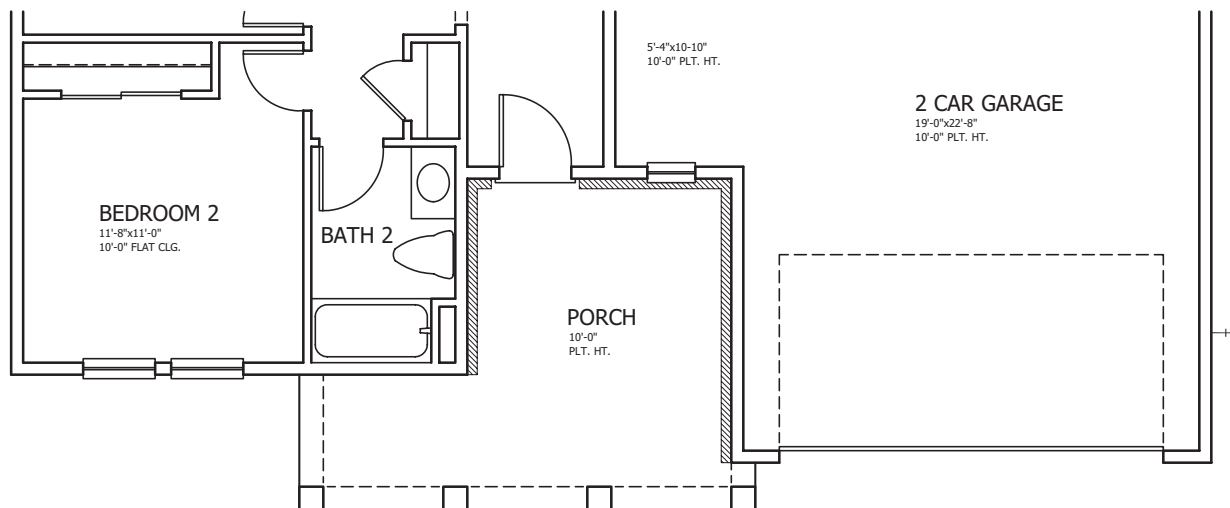
As a homebuilder and developer with higher standards, our homes and communities are thoughtfully designed and tailored to meet the needs of our future residents in both comfort and enjoyment. Our floor plans have pre-designed structural options in order to easily allow you the flexibility to personalize your home to suit your lifestyle—not our logistics. Please contact us today to discuss your particular needs.

OTHER ELEVATIONS

E CRAFTSMAN



E FARMHOUSE



ROBINSON WITH BONUS



COASTAL



CRAFTSMAN

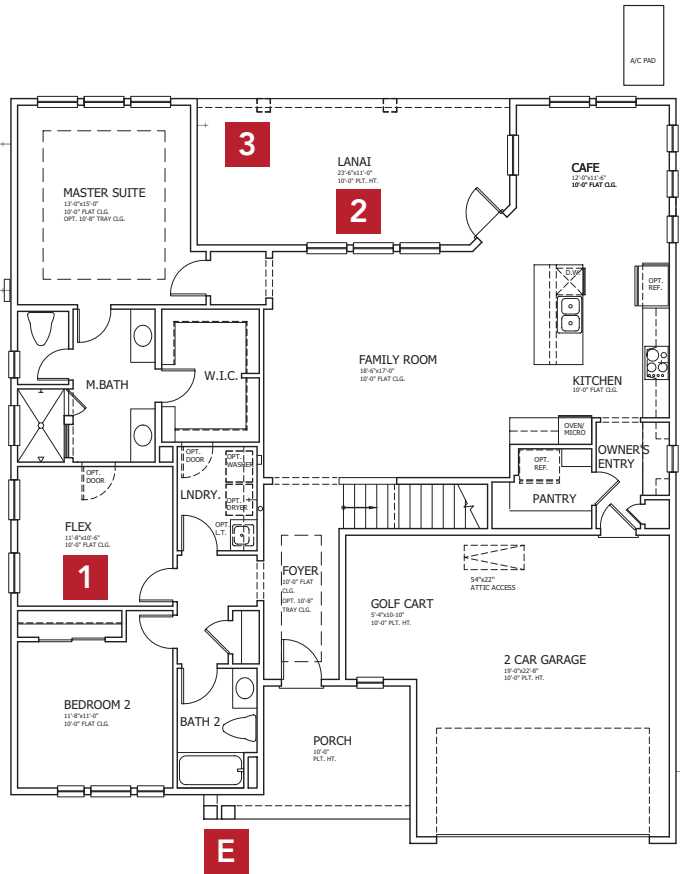


FARMHOUSE

* Not all elevations may be offered in all communities. Please check with your Community New Home Consultant for availability.

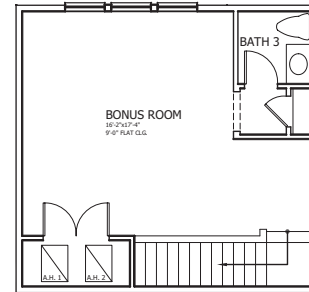
BONUS FLOOR PLAN OPTIONS

FIRST FLOOR COASTAL



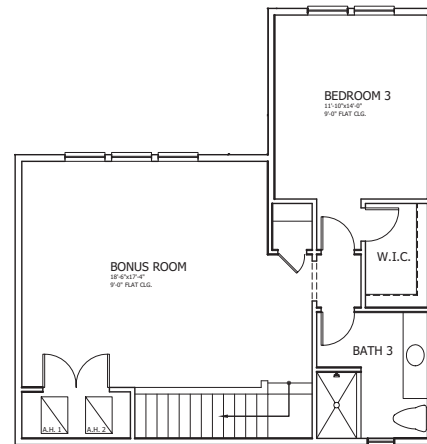
* All previous options available

4 UPPER FLOOR PLAN



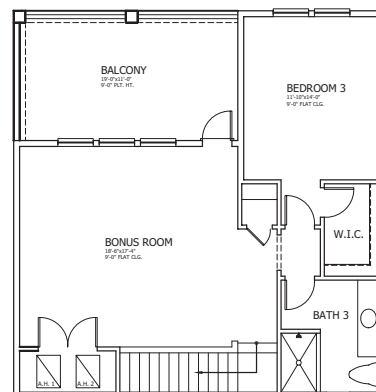
* 2271 total square feet living space

5 UPPER FLOOR PLAN WITH BEDROOM



* 2599 total square feet living space

6 UPPER FLOOR PLAN WITH BEDROOM AND BALCONY



* 2599 total square feet living space

* 209 square feet balcony

In the interest of continuous product improvements and to meet changing market conditions, MasterCraft Builder Group reserves the right to modify floor plans, exterior elevations, specifications, features, prices and product types without prior notice or obligation. Some features may vary from plan to plan. All plans, elevation renderings, and artist's conceptions are not necessarily to scale. All square footages are approximate. Window size, type and location may vary with each elevation.

◆ **MASTERCRAFT** ◆
BUILDER GROUP