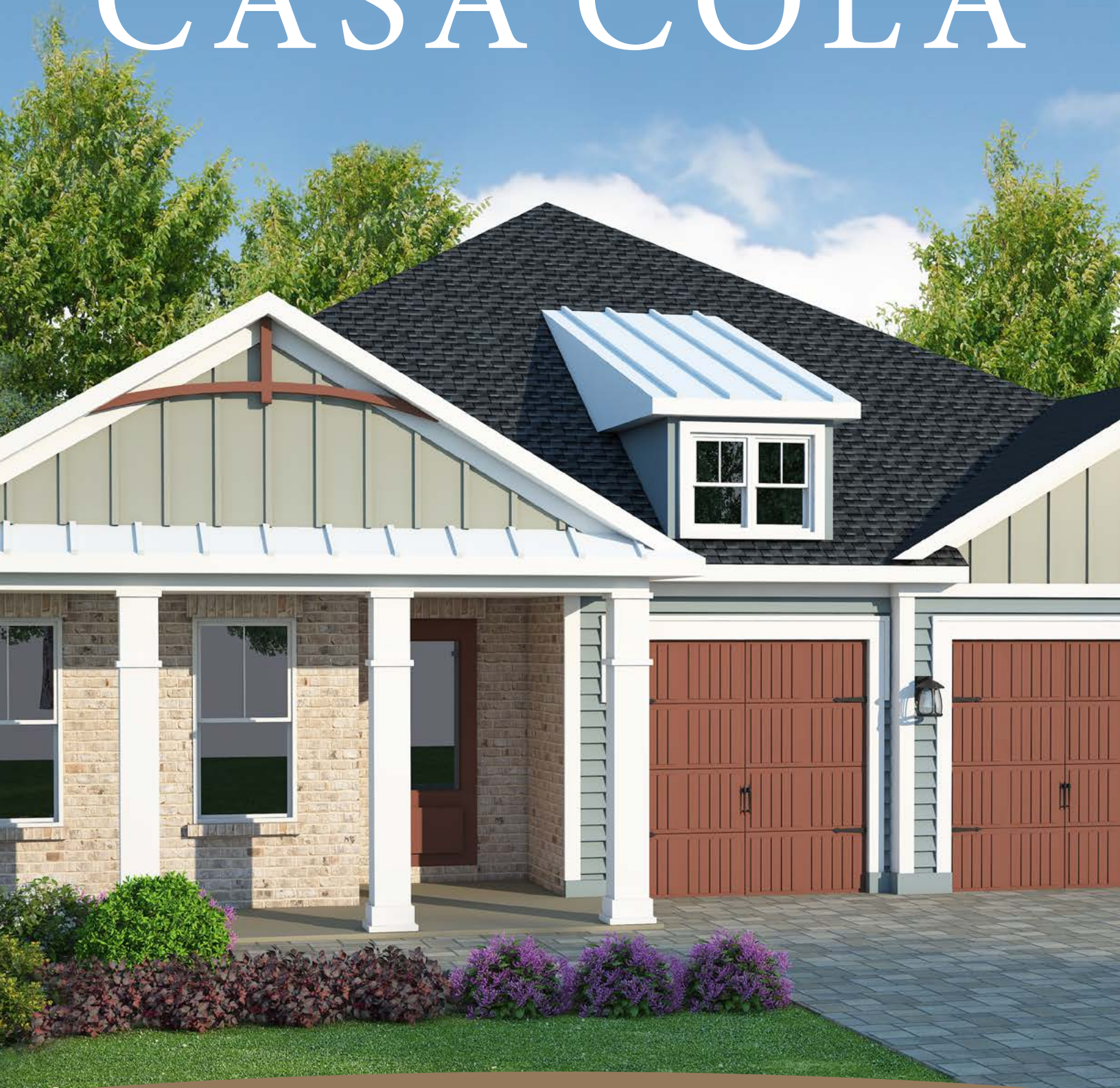


# CASA COLA



◆ **MASTERCRAFT.** ◆  
BUILDER GROUP



COASTAL



CRAFTSMAN

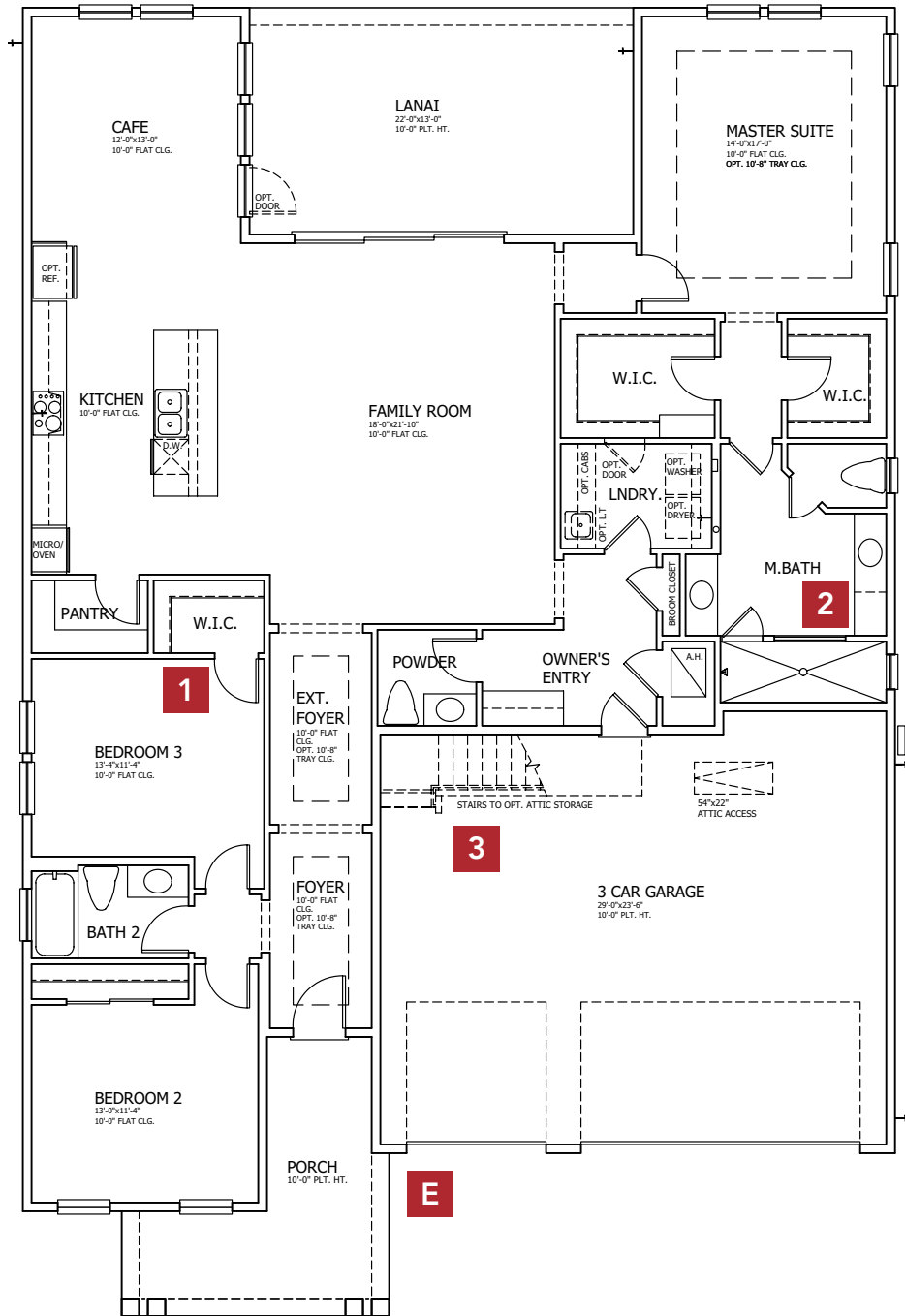


FARMHOUSE

\* Not all elevations may be offered in all communities. Please check with your Community New Home Consultant for availability.

# CASA COLA COASTAL

## FIRST FLOOR



**3 BEDROOMS**

**2.5 BATHROOMS**

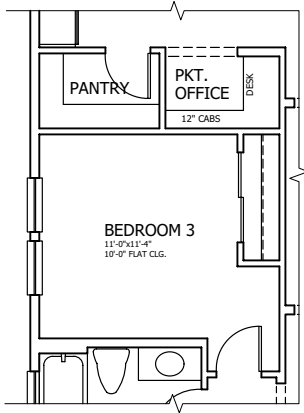
**3 CAR GARAGE**

**2,280 SQUARE FEET**

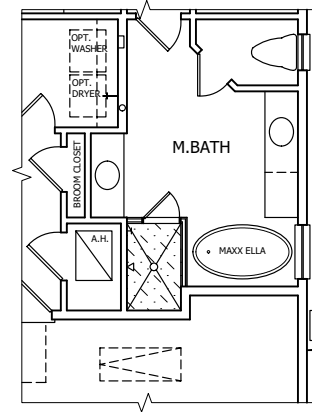
In the interest of continuous product improvements and to meet changing market conditions, MasterCraft Builder Group reserves the right to modify floor plans, exterior elevations, specifications, features, prices and product types without prior notice or obligation. Some features may vary from plan to plan. All plans, elevation renderings, and artist's conceptions are not necessarily to scale. All square footages are approximate. Window size, type and location may vary with each elevation.

# FLOOR PLAN OPTIONS

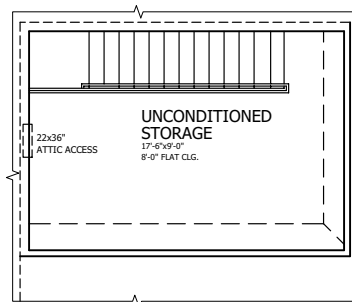
## 1 POCKET OFFICE AT PANTRY



## 2 TUB/SHOWER AT MASTER BATH

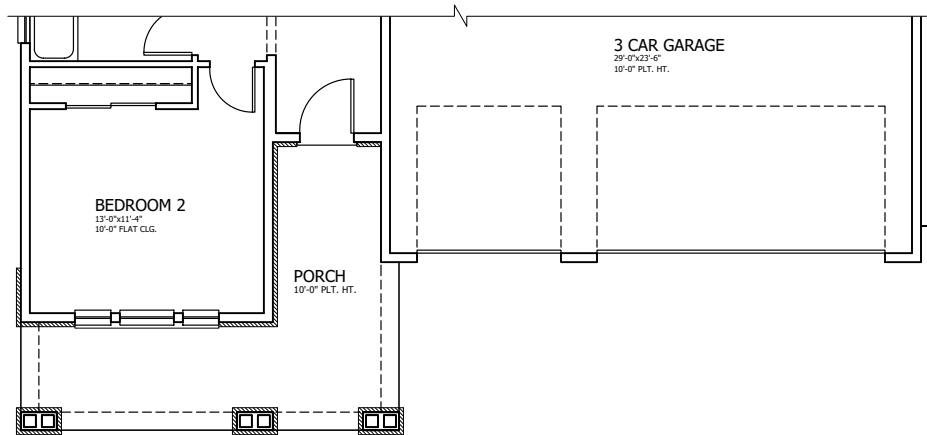


## 3 OPTIONAL ATTIC STORAGE

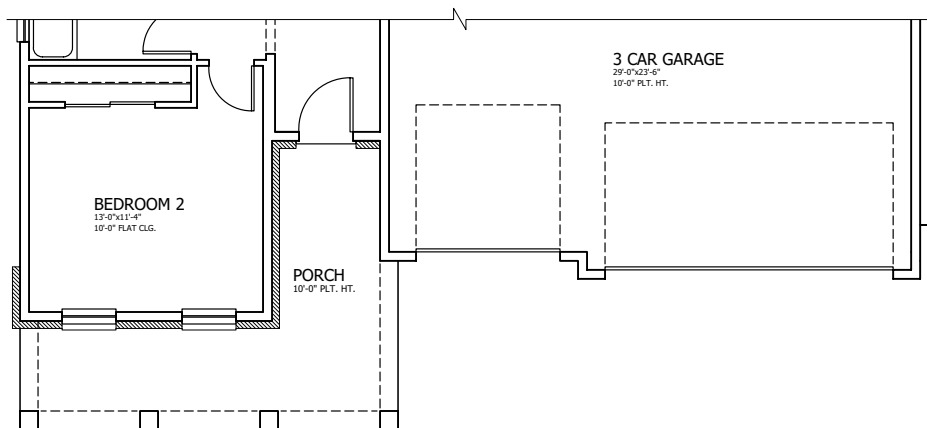


# OTHER ELEVATIONS

## E CRAFTSMAN



## E FARMHOUSE



◆ **MASTERCRAFT** ◆  
BUILDER GROUP