

# GRAYSON



♦ MASTERCRAFT ♦  
BUILDER GROUP





GRAYSON COASTAL



GRAYSON CRAFTSMAN

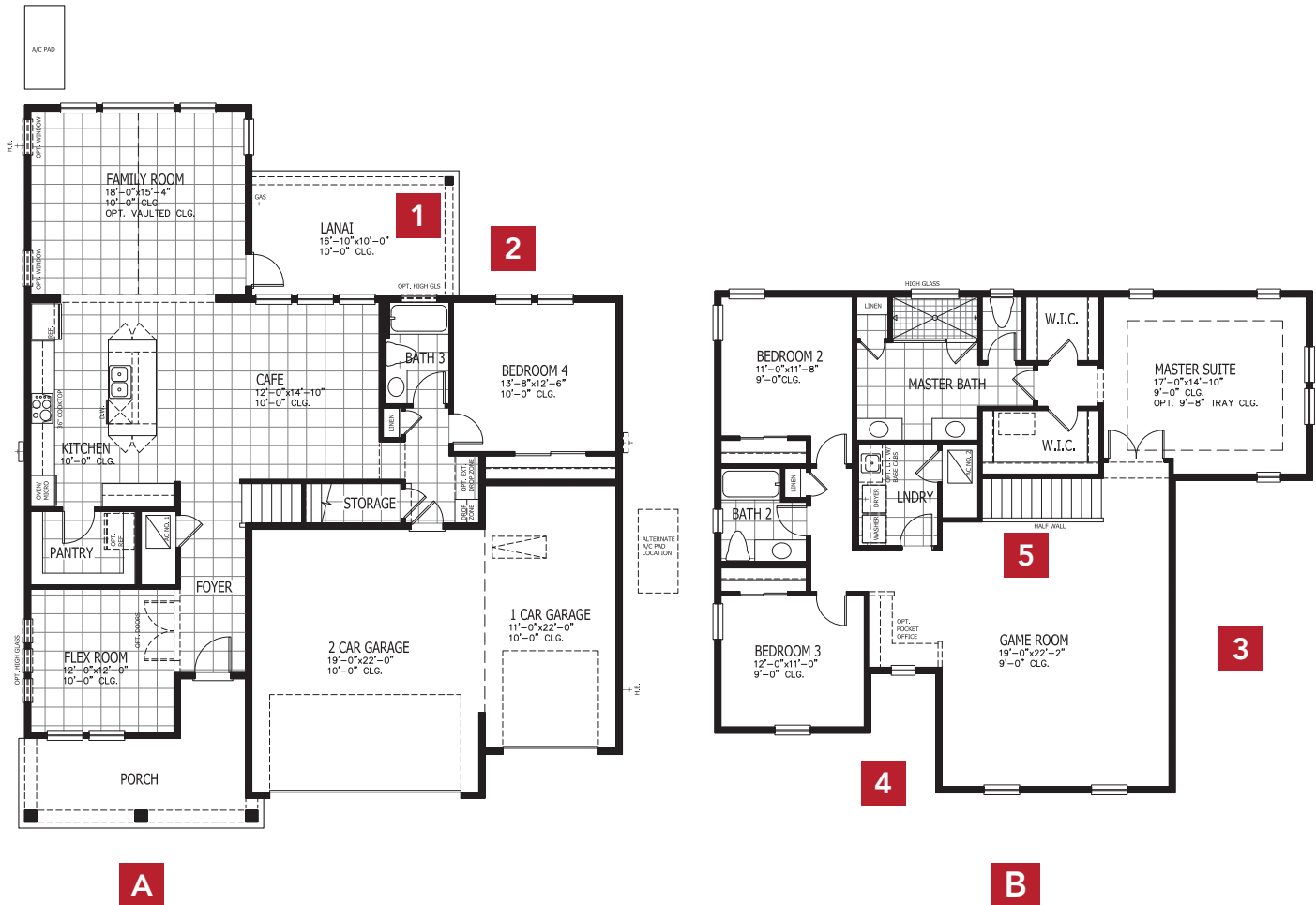


GRAYSON FARMHOUSE

# GRAYSON COASTAL

## FIRST FLOOR

## SECOND FLOOR



**4-5 BEDROOMS**

**3-4 BATHROOMS**

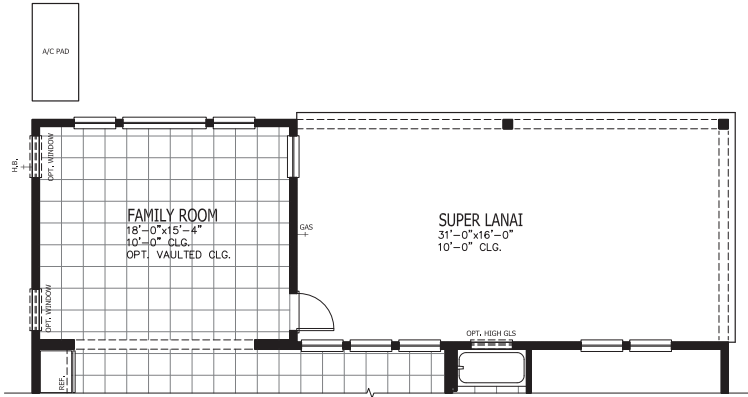
**3 CAR GARAGE**

**3,185-3,444 SQUARE FEET**

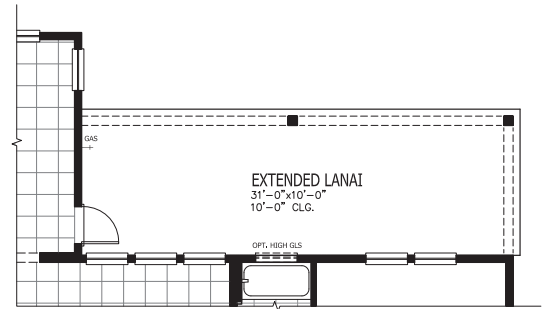
In the interest of continuous product improvements and to meet changing market conditions, MasterCraft Builder Group reserves the right to modify floor plans, exterior elevations, specifications, features, prices and product types without prior notice or obligation. Some features may vary from plan to plan. All plans, elevation renderings, and artist's conceptions are not necessarily to scale. All square footages are approximate. Window size, type and location may vary with each elevation. 11/29/2021

# GRAYSON FLOOR PLAN OPTIONS

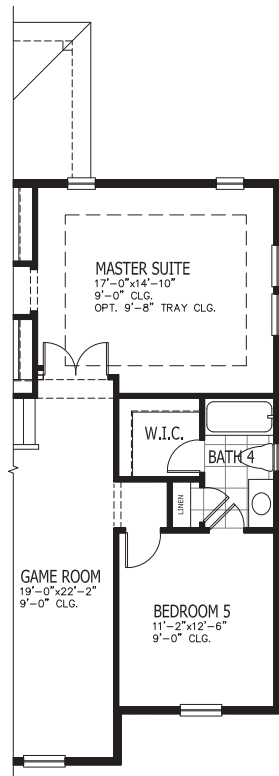
## 1 SUPER LANAI



## 2 EXTENDED LANAI

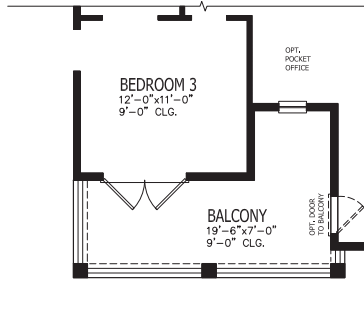


## 3 BEDROOM 5 & BATHROOM 4



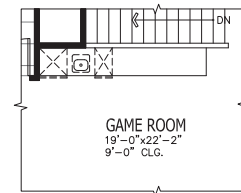
ADDS 259 SQUARE FEET

## 4 BALCONY



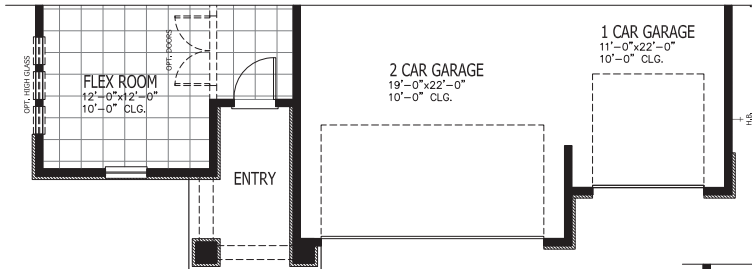
COASTAL ELEVATION ONLY

## 5 BEVERAGE CENTER

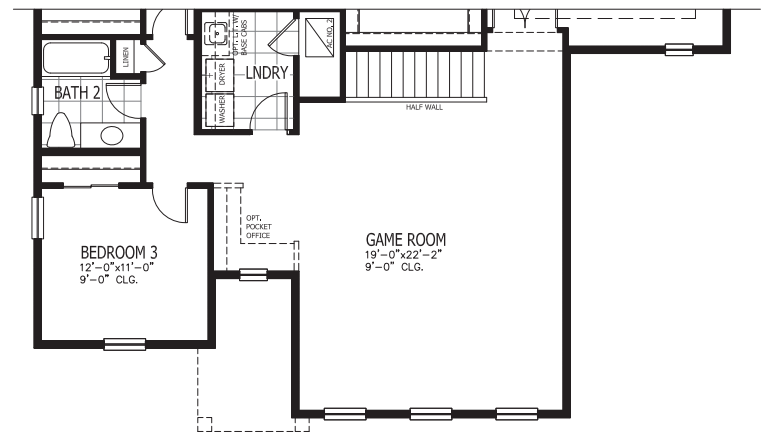


# GRAYSON OTHER ELEVATIONS

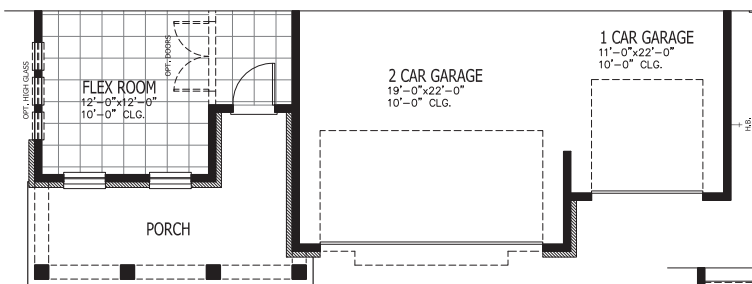
## A CRAFTSMAN



## B CRAFTSMAN



## A FARMHOUSE



## B FARMHOUSE

