

DURBIN



◆ **MASTERCRAFT.** ◆
BUILDER GROUP



DURBIN COASTAL



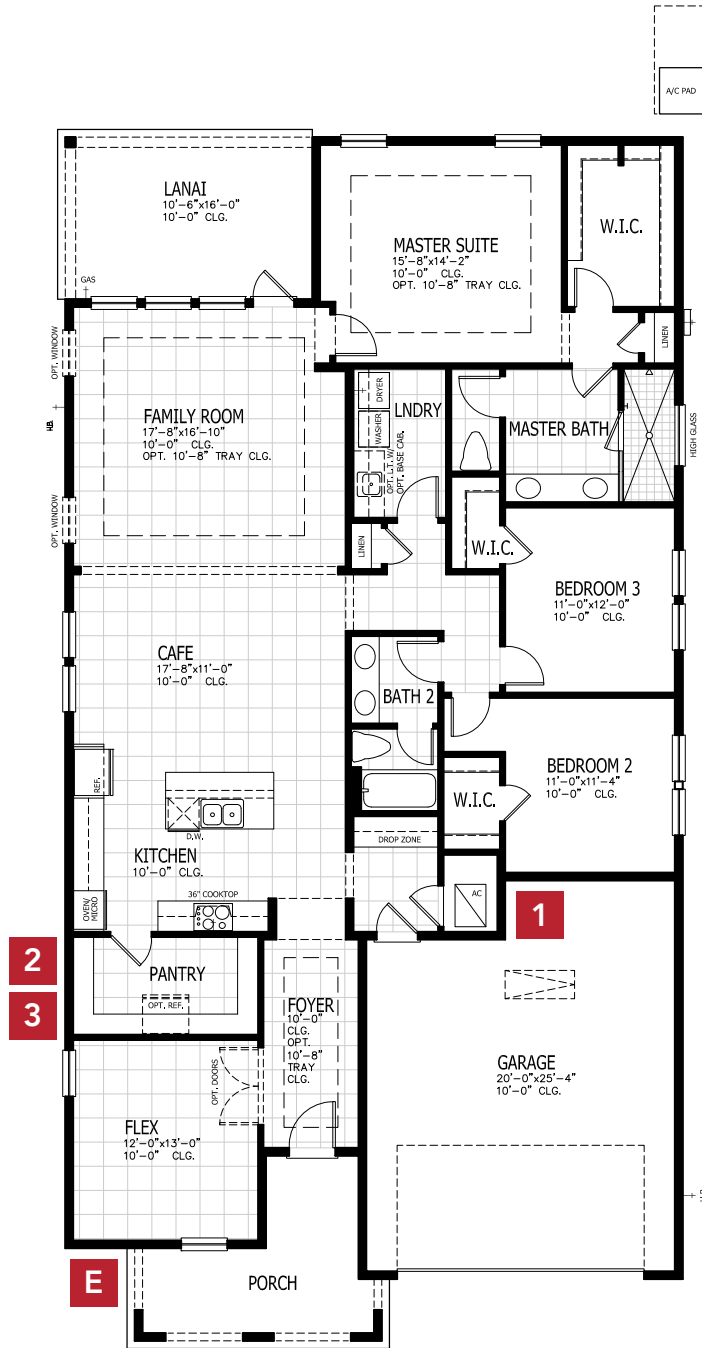
DURBIN CRAFTSMAN



DURBIN FARMHOUSE

DURBIN COASTAL

FIRST FLOOR



3-4 BEDROOMS

2-3 BATHROOMS

2 CAR GARAGE

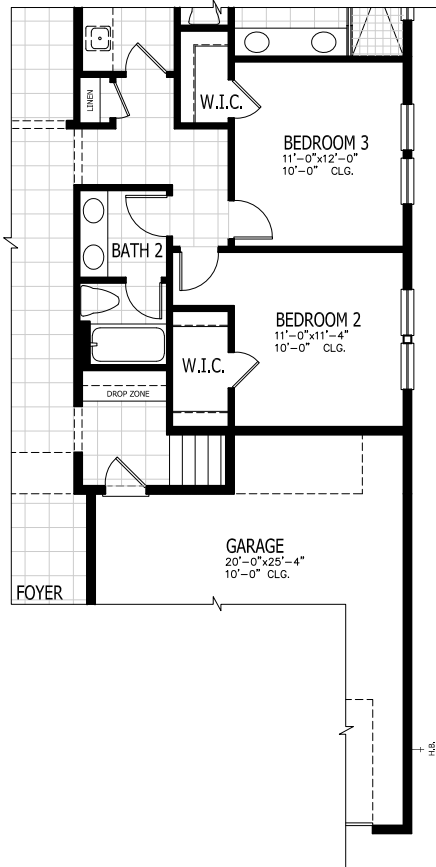
2,219-2,822 SQUARE FEET

In the interest of continuous product improvements and to meet changing market conditions, MasterCraft Builder Group reserves the right to modify floor plans, exterior elevations, specifications, features, prices and product types without prior notice or obligation. Some features may vary from plan to plan. All plans, elevation renderings, and artist's conceptions are not necessarily to scale. All square footages are approximate. Window size, type and location may vary with each elevation. 04/01/2020

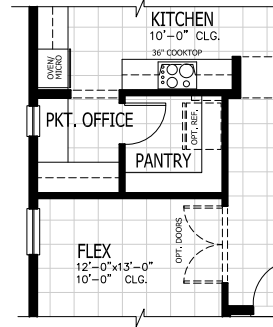
DURBIN FLOOR PLAN OPTIONS

1 BONUS ROOM

MAIN FLOOR

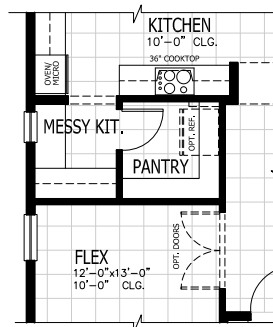
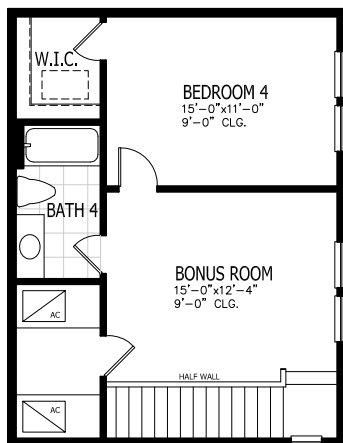


2 POCKET OFFICE



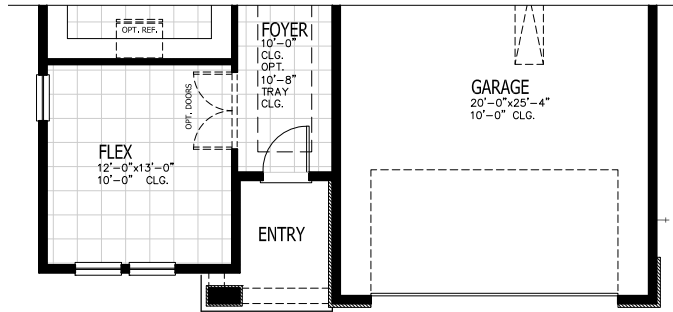
3 MESSY KITCHEN

UPPER FLOOR

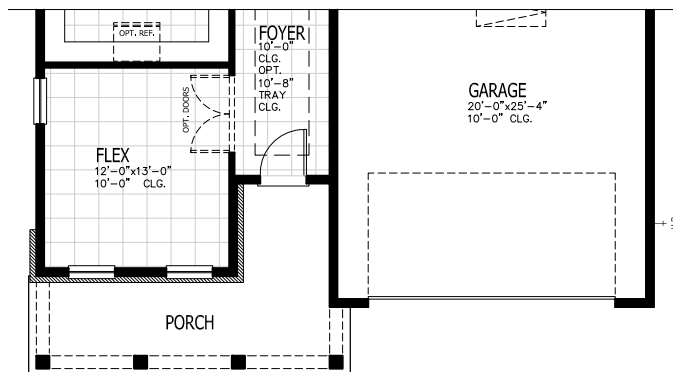


DURBIN OTHER ELEVATIONS

E CRAFTSMAN



E FARMHOUSE



◆ **MASTERCRAFT** ◆
BUILDER GROUP