

SANDPIPER



◆ *MASTERCRAFT.* ◆
BUILDER GROUP



COASTAL TRADITIONAL



FLORIDA BUNGALOW



FLORIDA FARMHOUSE

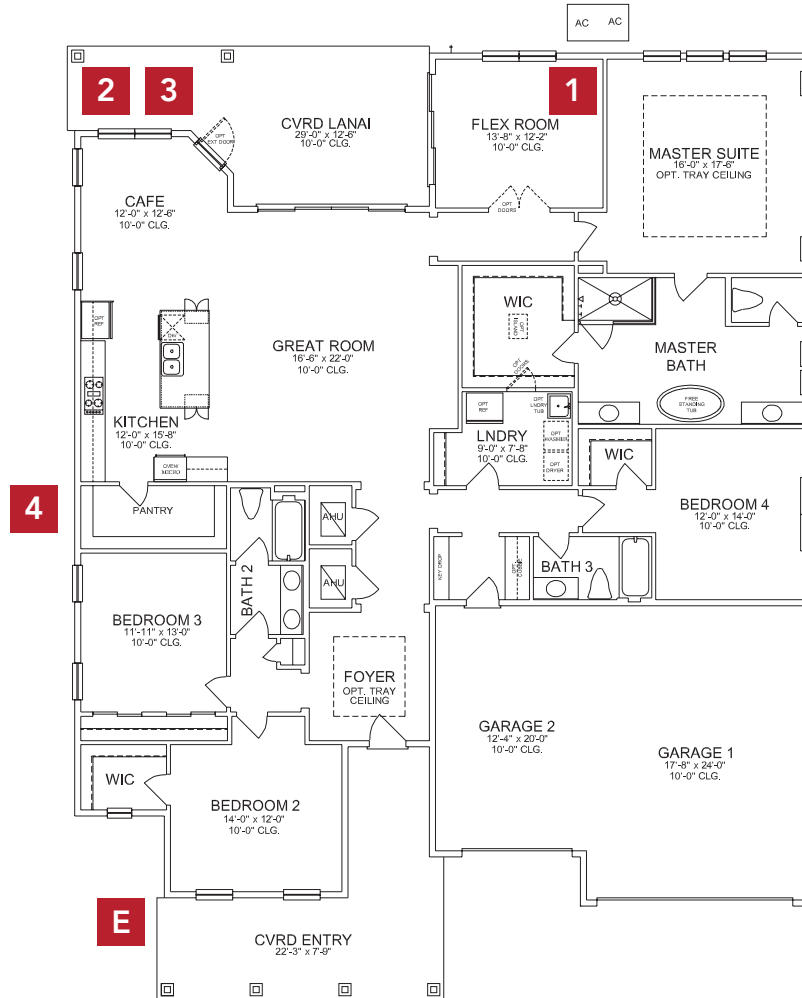


SPANISH CRAFTSMAN

* Not all elevations may be offered in all communities. Please check with your Community New Home Consultant for availability.

SANDPIPER COASTAL TRADITIONAL

FIRST FLOOR



BASE INFORMATION

4

BEDROOMS

3

BATHROOMS

3

CAR GARAGE

2,987

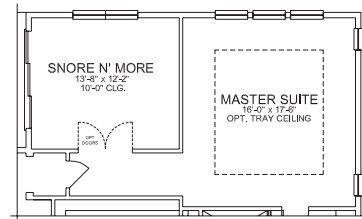
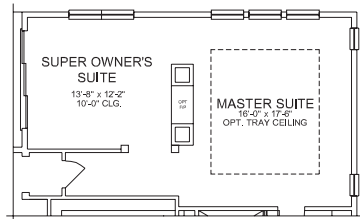
SQUARE FEET

In the interest of continuous product improvements and to meet changing market conditions, MasterCraft Builder Group reserves the right to modify floor plans, exterior elevations, specifications, features, prices and product types without prior notice or obligation. Some features may vary from plan to plan. All plans, elevation renderings, and artist's conceptions are not necessarily to scale. All square footages are approximate. Window size, type and location may vary with each elevation.

FLOOR PLAN OPTIONS

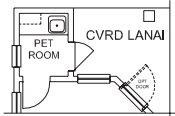
1 FLEX ROOM

Super Owner's Suite

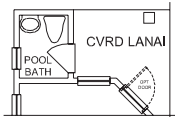


Snore N' More

2 COVERED LANAI

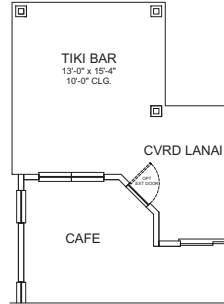


*Pet Room
Additional 35
square feet*

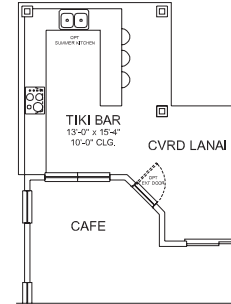


*Pool Bath
Additional 35
square feet*

3 EXTENDED LANAI

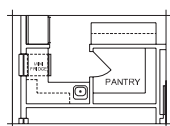


*Tiki Bar Patio
Extension
Additional 136
square feet*

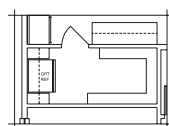


*Tiki Bar Patio Extension
with Summer Kitchen
Additional 136
square feet*

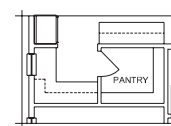
4 PANTRY



Beverage Center



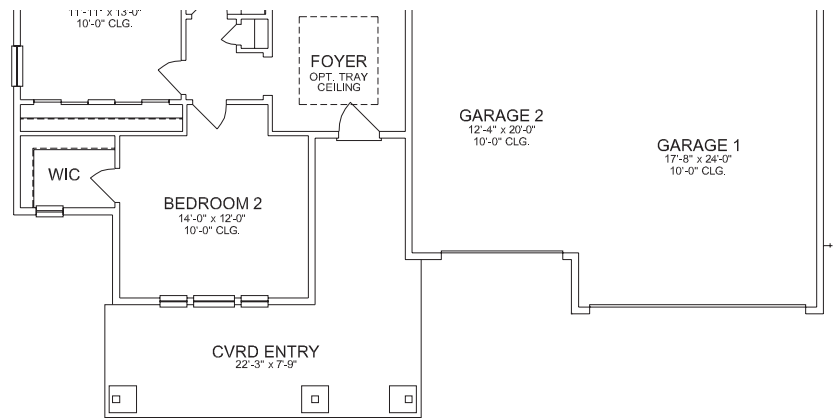
Power Pantry



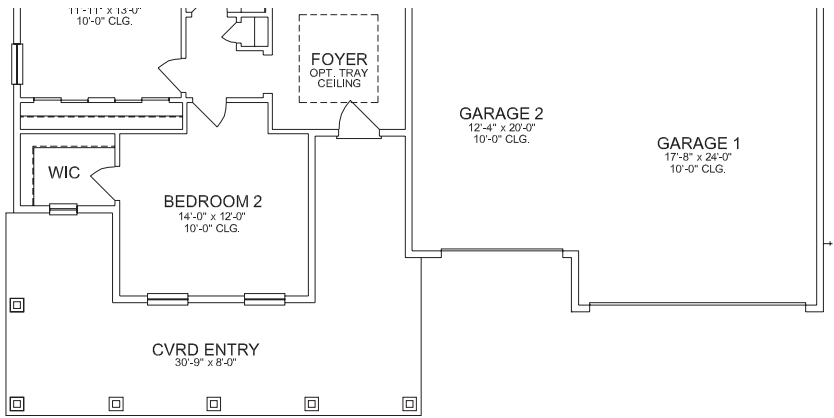
Messy Kitchen

OTHER ELEVATIONS

E FLORIDA BUNGALOW



E FLORIDA FARMHOUSE



E SPANISH CRAFTSMAN

