

# TOLOMATO



♦ **MASTERCRAFT.** ♦  
BUILDER GROUP





COASTAL



CRAFTSMAN



FARMHOUSE

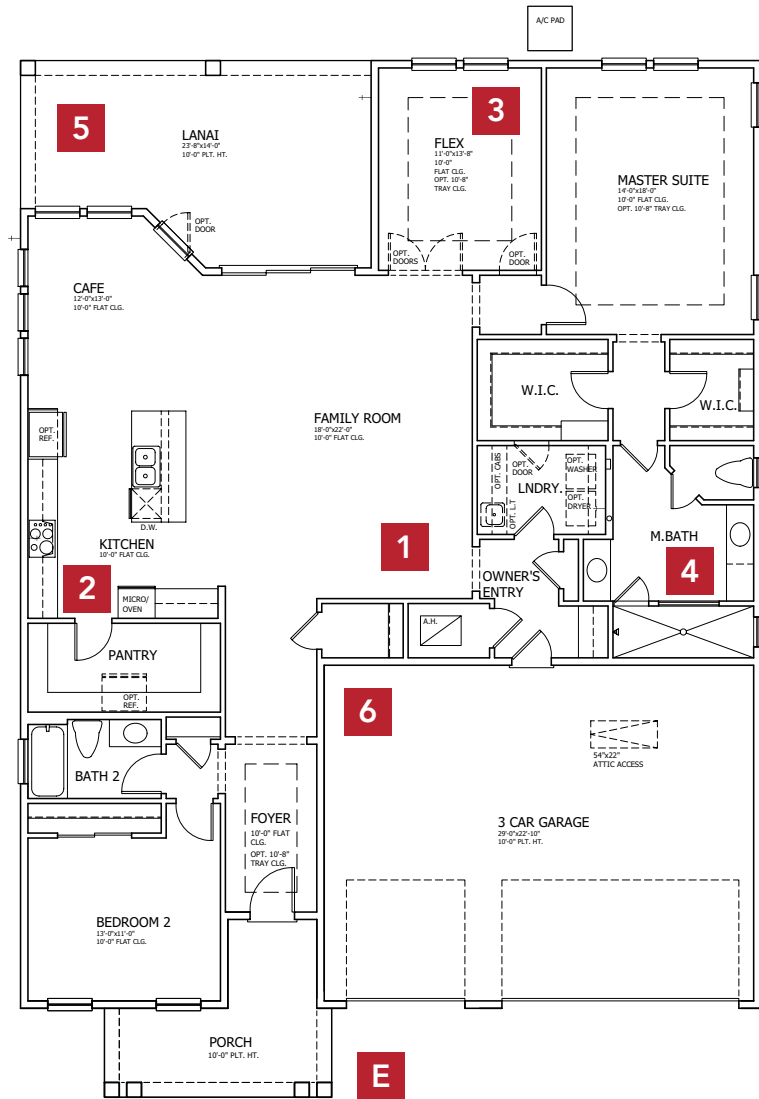


SPANISH

\* Not all elevations may be offered in all communities. Please check with your Community New Home Consultant for availability.

# TOLOMATO COASTAL

## FIRST FLOOR



**2 BEDROOMS**

**2 BATHROOMS**

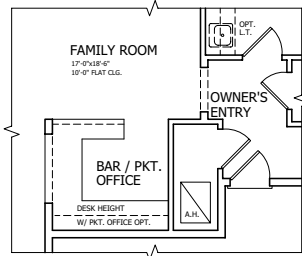
**3 CAR GARAGE**

**2,197 SQUARE FEET**

In the interest of continuous product improvements and to meet changing market conditions, MasterCraft Builder Group reserves the right to modify floor plans, exterior elevations, specifications, features, prices and product types without prior notice or obligation. Some features may vary from plan to plan. All plans, elevation renderings, and artist's conceptions are not necessarily to scale. All square footages are approximate. Window size, type and location may vary with each elevation.

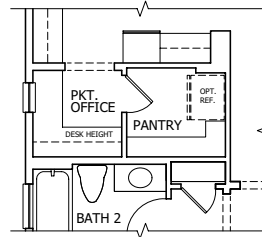
# FLOOR PLAN OPTIONS

## 1 BAR/POCKET OFFICE

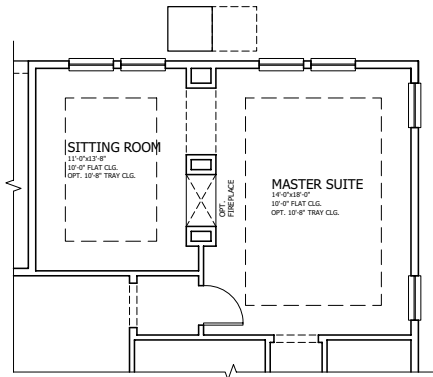


\* Not available with Bonus

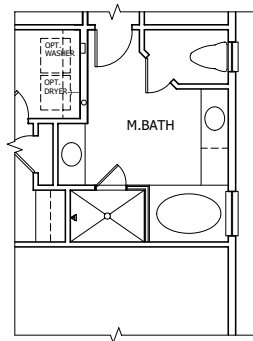
## 2 POCKET OFFICE/MESSY KITCHEN



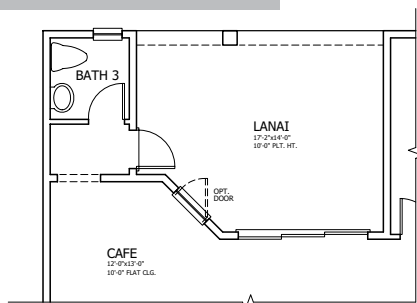
## 3 SITTING ROOM AT MASTER SUITE



## 4 TUB/SHOWER AT MASTER BATH



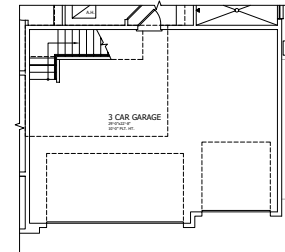
## 5 CABANA BATH 3



\* Adds additional 65 square foot of living space

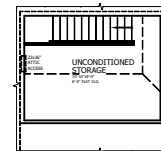
## 6 ATTIC STORAGE

### MAIN FLOOR AT OPT. ATTIC STORAGE



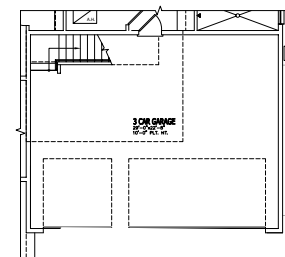
Elevation "A" shown

### ATTIC UNCONDITIONED SPACE



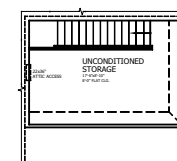
Elevation "A" shown

### MAIN FLOOR AT OPT. ATTIC STORAGE



Elevation "B" shown  
Similar at elevations "C&D"

### ATTIC UNCONDITIONED SPACE

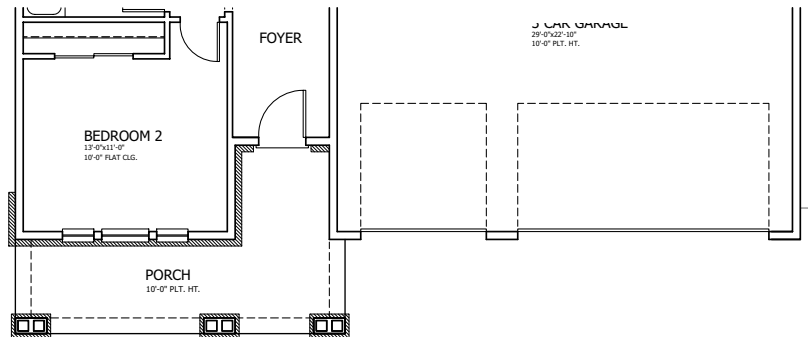


Elevation "B" shown

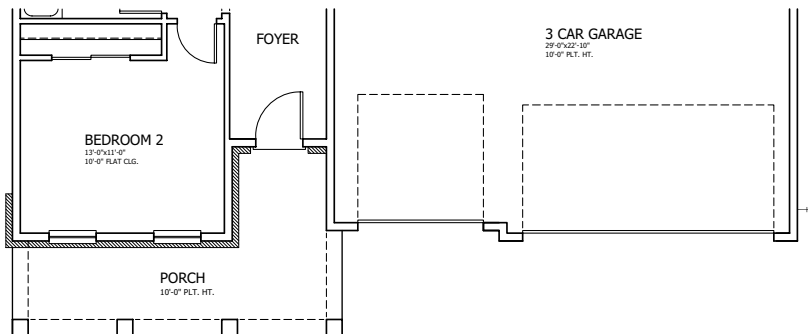
\* Not available with bonus room options  
\* Not available with BAR/PKT. office option

# OTHER ELEVATIONS

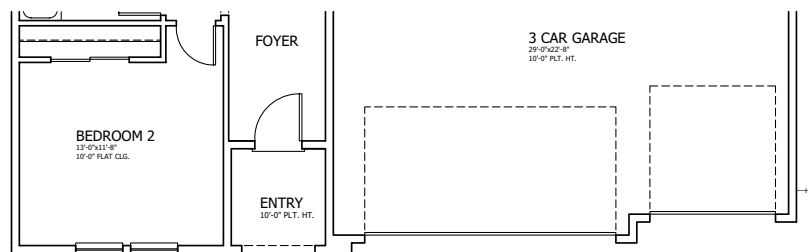
## E CRAFTSMAN



## E FARMHOUSE



## E SPANISH





# TOLOMATO WITH BONUS



COASTAL WITH BONUS



CRAFTSMAN WITH BONUS



FARMHOUSE WITH BONUS

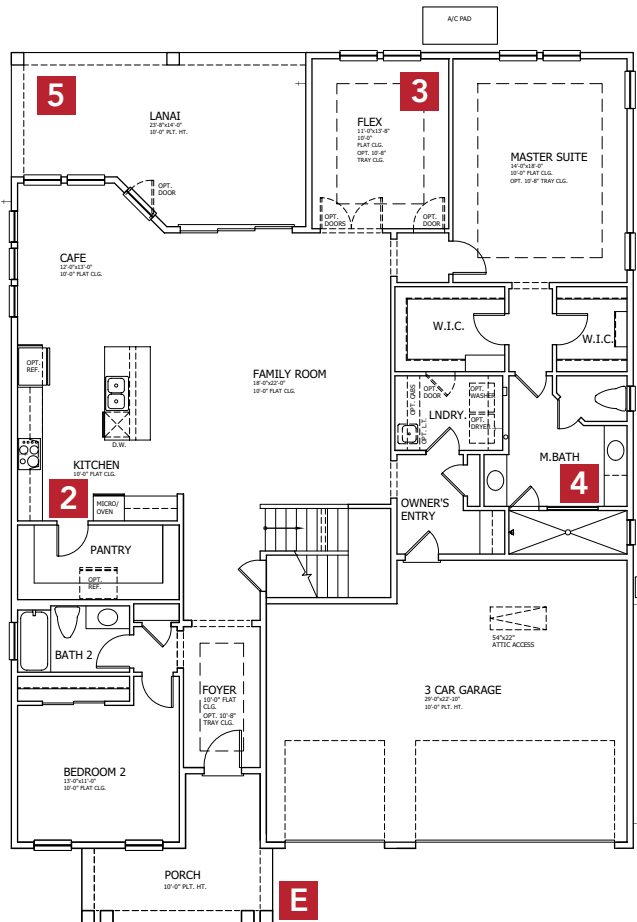


SPANISH WITH BONUS

\* Not all elevations may be offered in all communities. Please check with your Community New Home Consultant for availability.

# BONUS FLOOR PLAN OPTIONS

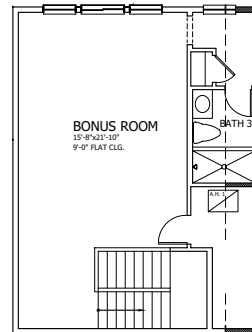
## FIRST FLOOR COASTAL



\* Options 1 + 6 not available on bonus plans

7

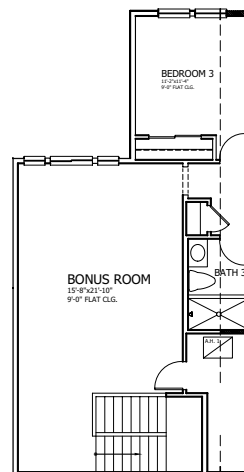
## UPPER FLOOR PLAN



\* 2845 total square feet living space

8

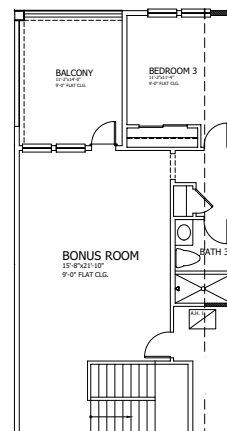
## UPPER FLOOR PLAN WITH BEDROOM



\* 3020 total square feet living space

9

## UPPER FLOOR PLAN WITH BEDROOM AND BALCONY



\* 3020 total square living space

\* 156 square feet balcony

In the interest of continuous product improvements and to meet changing market conditions, MasterCraft Builder Group reserves the right to modify floor plans, exterior elevations, specifications, features, prices and product types without prior notice or obligation. Some features may vary from plan to plan. All plans, elevation renderings, and artist's conceptions are not necessarily to scale. All square footages are approximate. Window size, type and location may vary with each elevation.

