

CHADWICK



◆ MASTERCRAFT ◆
BUILDER GROUP



CHADWICK COASTAL



CHADWICK CRAFTSMAN



CHADWICK FARMHOUSE

CHADWICK COASTAL

FIRST FLOOR

SECOND FLOOR



5 BEDROOMS

4-4.5 BATHROOMS

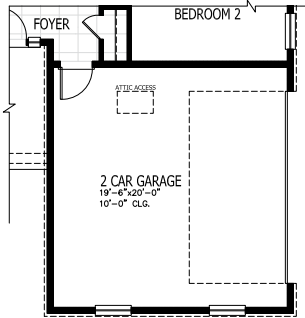
3-4 CAR GARAGE

3895-4237 SQUARE FEET

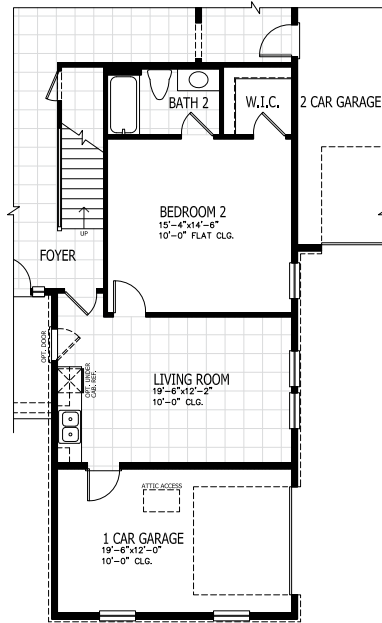
In the interest of continuous product improvements and to meet changing market conditions, MasterCraft Builder Group reserves the right to modify floor plans, exterior elevations, specifications, features, prices and product types without prior notice or obligation. Some features may vary from plan to plan. All plans, elevation renderings, and artist's conceptions are not necessarily to scale. All square footages are approximate. Window size, type and location may vary with each elevation. 06/01/2022

CHADWICK FLOOR PLAN OPTIONS

1 4 CAR GARAGE

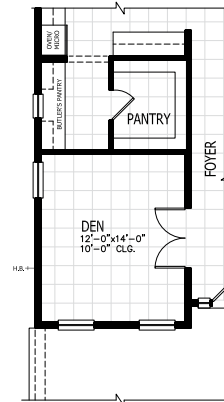


2 MULTI-GENERATIONAL SUITE

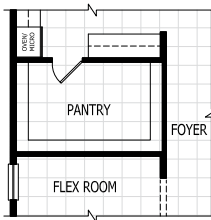


ADDS 260 SQUARE FEET

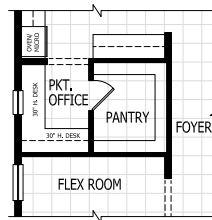
3 OPTIONAL DEN



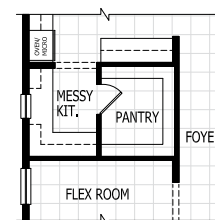
4 POWER PANTRY



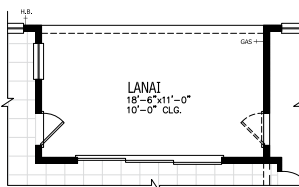
4 POCKET OFFICE



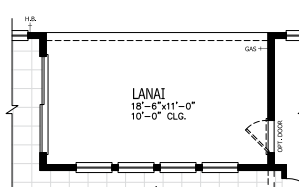
4 MESSY KITCHEN



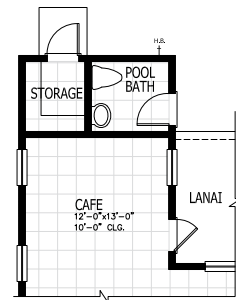
5 SLIDING GLASS DOOR AT GREAT ROOM



6 SLIDING GLASS DOOR AT CAFE



7 POOL BATH

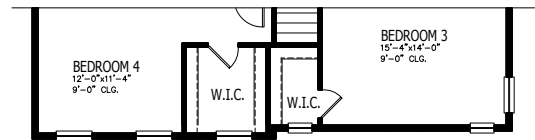
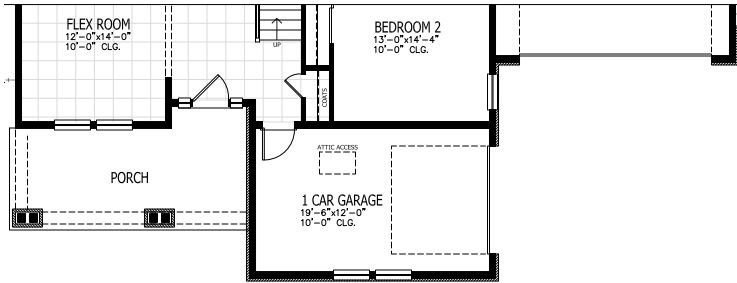


ADDS 82 SQUARE FEET

CHADWICK OTHER ELEVATIONS

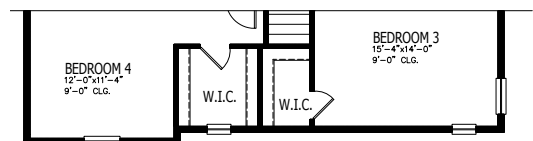
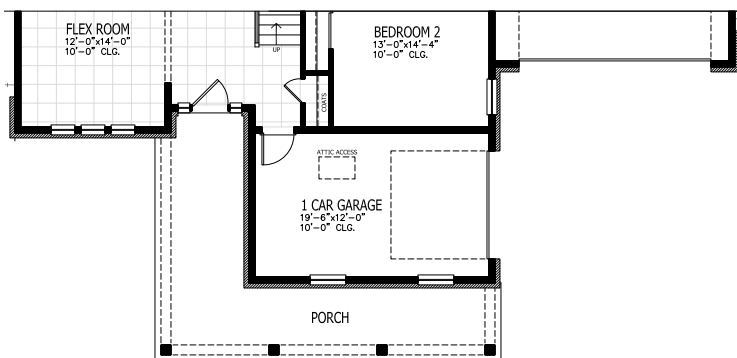
E CRAFTSMAN

SECOND FLOOR



E FARMHOUSE

SECOND FLOOR



◆ **MASTERCRAFT** ◆
BUILDER GROUP