

# *EGRET*



◆ **MASTERCRAFT.** ◆  
BUILDER GROUP





COASTAL TRADITIONAL



FLORIDA BUNGALOW



FLORIDA FARMHOUSE

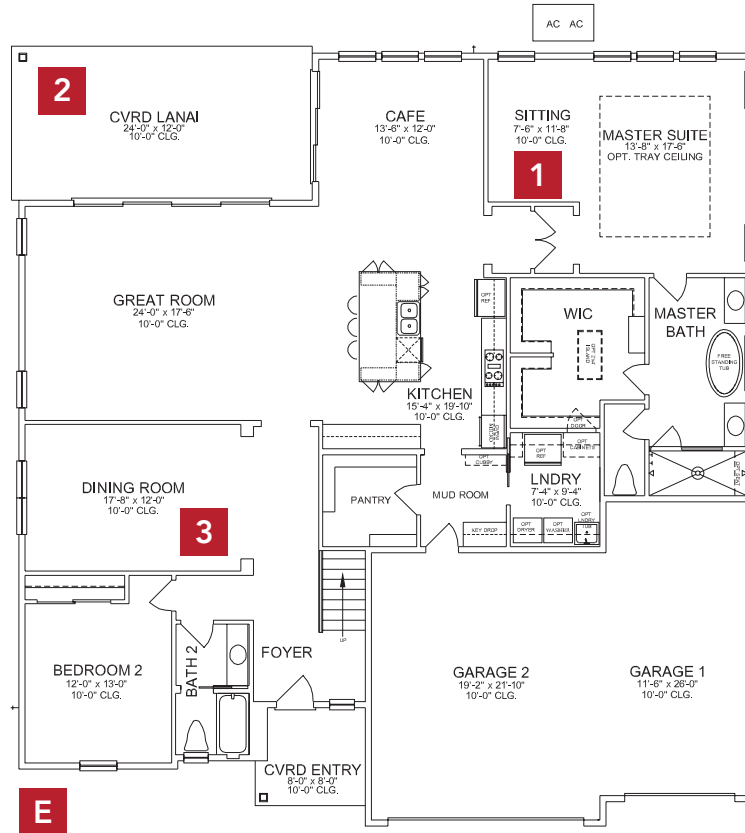


SPANISH CRAFTSMAN

\* Not all elevations may be offered in all communities. Please check with your Community New Home Consultant for availability.

# EGRET COASTAL TRADITIONAL

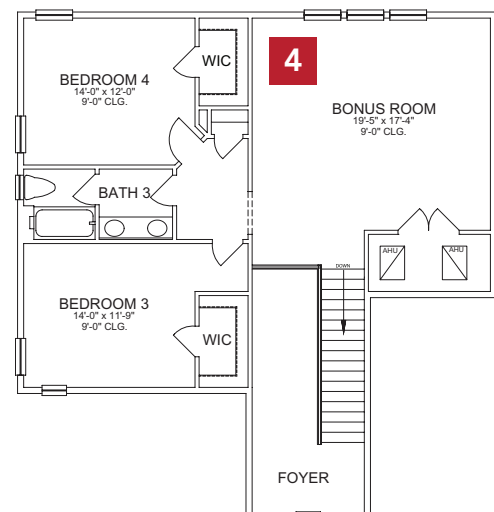
## FIRST FLOOR



## BASE INFORMATION

- 4 BEDROOMS
- 3 BATHROOMS
- 3 CAR GARAGE
- 3,621 SQUARE FEET

## SECOND FLOOR

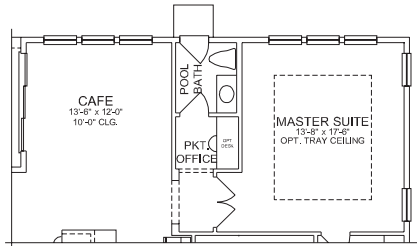


In the interest of continuous product improvements and to meet changing market conditions, MasterCraft Builder Group reserves the right to modify floor plans, exterior elevations, specifications, features, prices and product types without prior notice or obligation. Some features may vary from plan to plan. All plans, elevation renderings, and artist's conceptions are not necessarily to scale. All square footages are approximate. Window size, type and location may vary with each elevation.

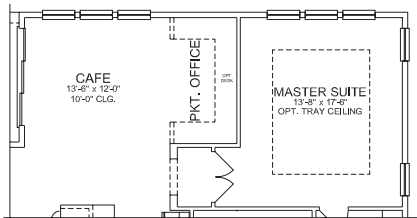


# FLOOR PLAN OPTIONS

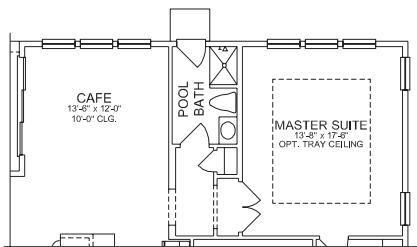
## 1 MASTER SUITE SITTING



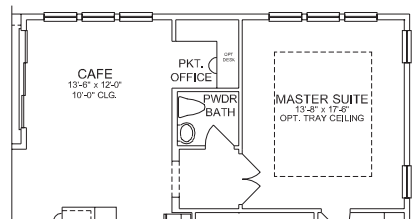
Pool Bath with Pocket Office



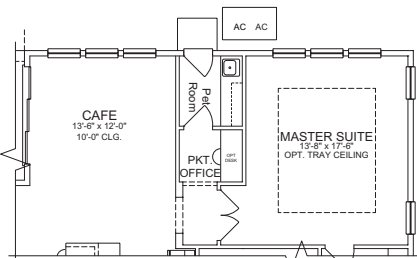
Pocket Office



Pool Bath

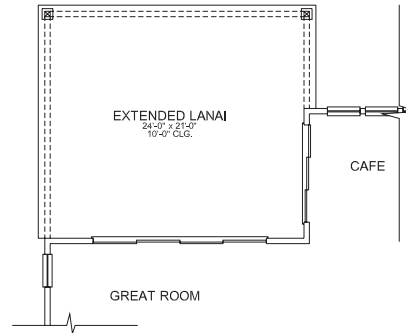


Pocket Office with Powder Bath



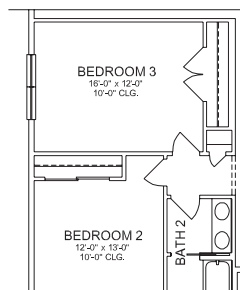
Pet Room with Pocket Office

## 2 EXTENDED LANAI

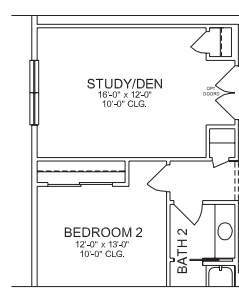


Cannot be built with  
2nd floor balcony  
Additional 245 square feet

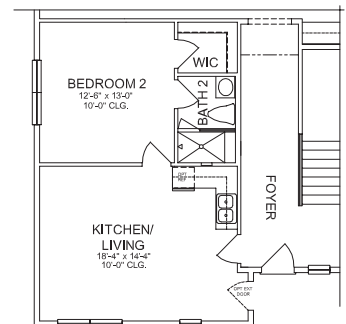
## 3 DINING ROOM



Bedroom 3 Downstairs

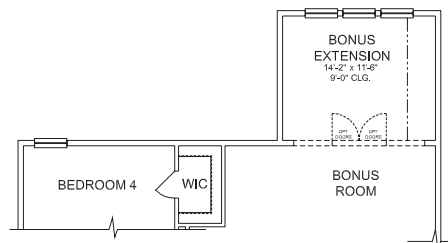


Study/Den

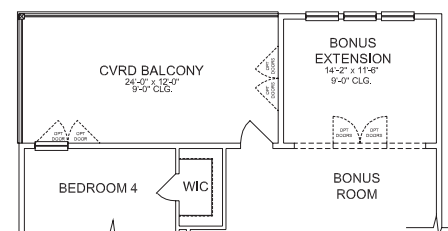


Multi-Generational Suite

## 4 BONUS ROOM



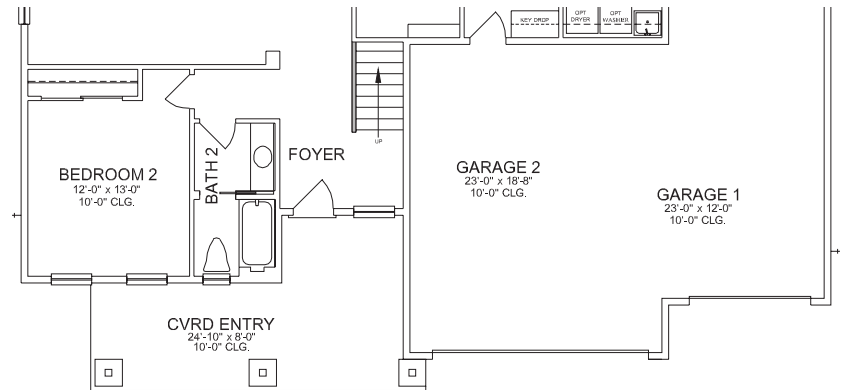
Bonus Extension  
Additional 182  
square feet



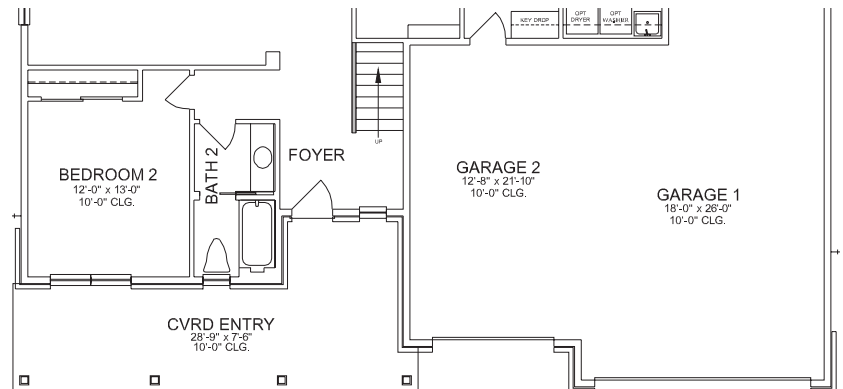
Balcony  
Cannot be built with  
extended lanai  
Can only be added  
with bonus extension  
Additional 470 square feet

# OTHER ELEVATIONS

## E FLORIDA BUNGALOW



## E FLORIDA FARMHOUSE



## E SPANISH CRAFTSMAN

