

OSPREY



◆ **MASTERCRAFT.** ◆
BUILDER GROUP



COASTAL



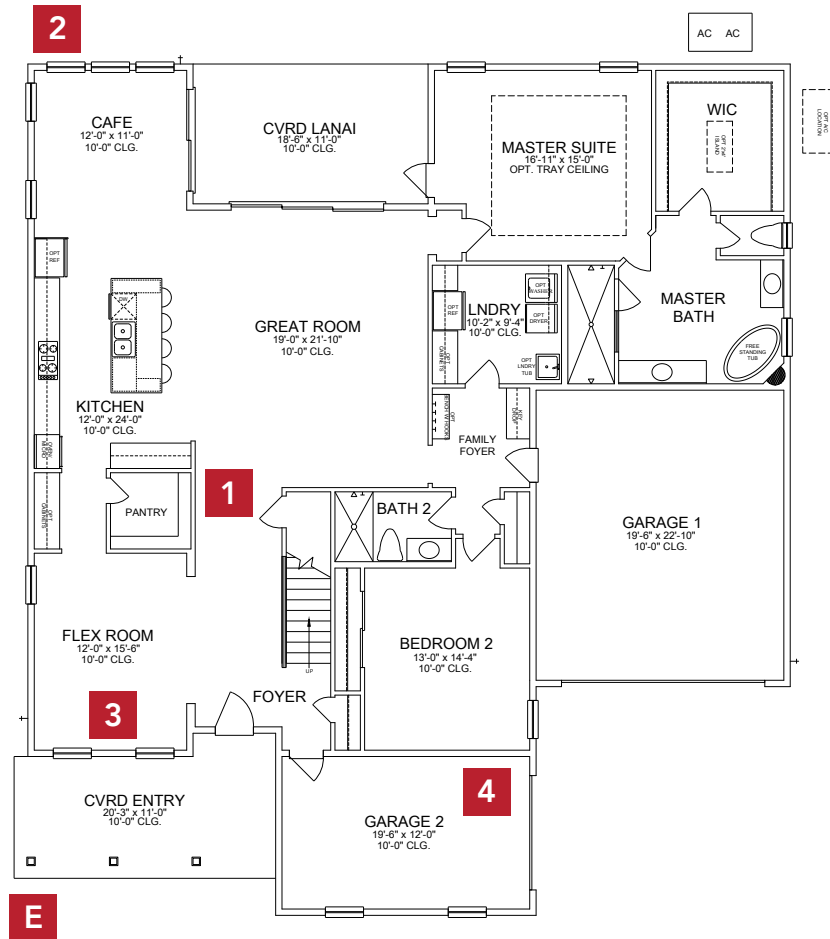
BUNGALOW



FARMHOUSE

OSPREY COASTAL

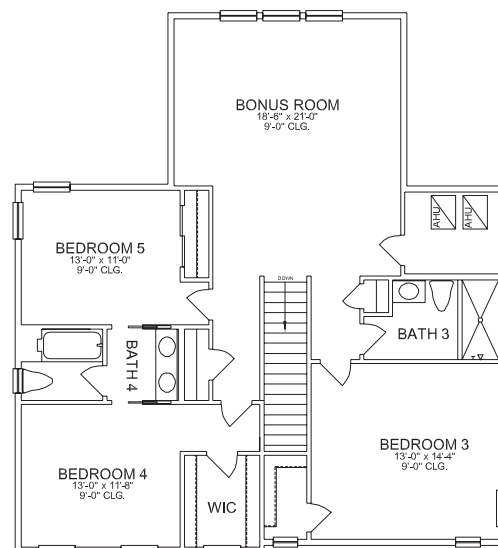
FIRST FLOOR



BASE INFORMATION

- 5** BEDROOMS
- 4** BATHROOMS
- 3** CAR GARAGE
- 3,868** SQUARE FEET

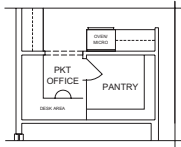
SECOND FLOOR



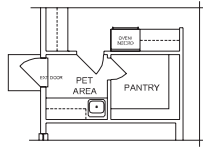
In the interest of continuous product improvements and to meet changing market conditions, MasterCraft Builder Group reserves the right to modify floor plans, exterior elevations, specifications, features, prices and product types without prior notice or obligation. Some features may vary from plan to plan. All plans, elevation renderings, and artist's conceptions are not necessarily to scale. All square footages are approximate. Window size, type and location may vary with each elevation.

FLOOR PLAN OPTIONS

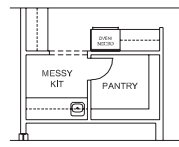
1 PANTRY



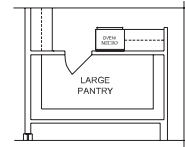
Pocket Office



Pet Room



Messy Kitchen

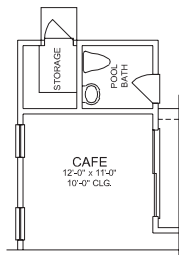


Power Pantry

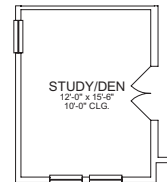
2 ADDITIONAL POOL BATH

Pool Bath with
Additional Storage

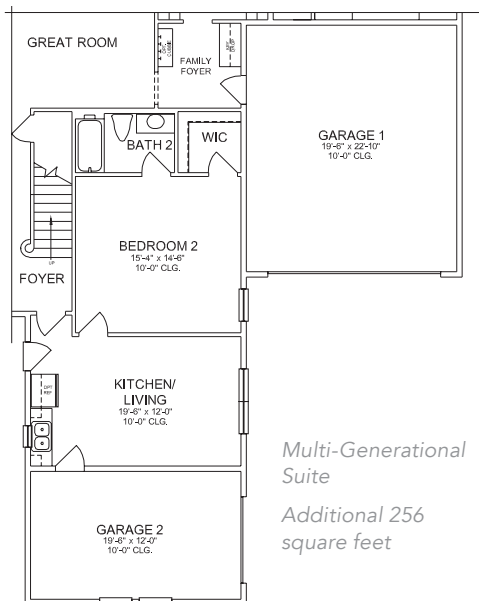
Additional 82
square feet



3 STUDY/DEN

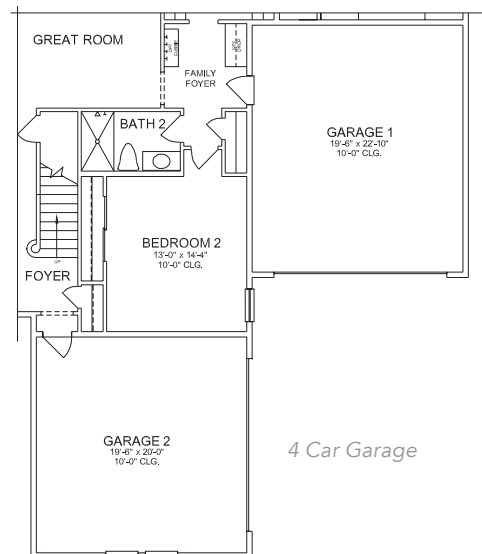


4 GARAGE



Multi-Generational
Suite

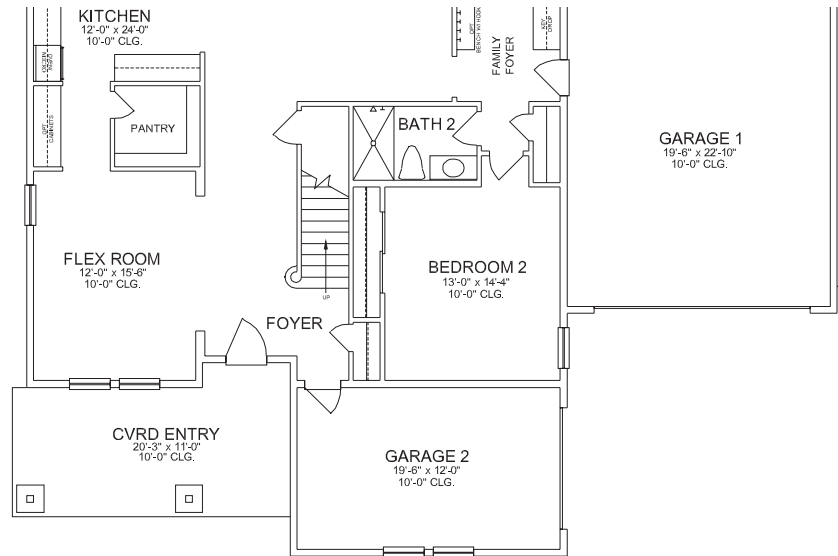
Additional 256
square feet



4 Car Garage

OTHER ELEVATIONS

E BUNGALOW



E FARMHOUSE

