

# MASON



◆ **MASTERCRAFT.** ◆  
BUILDER GROUP



MASON COASTAL



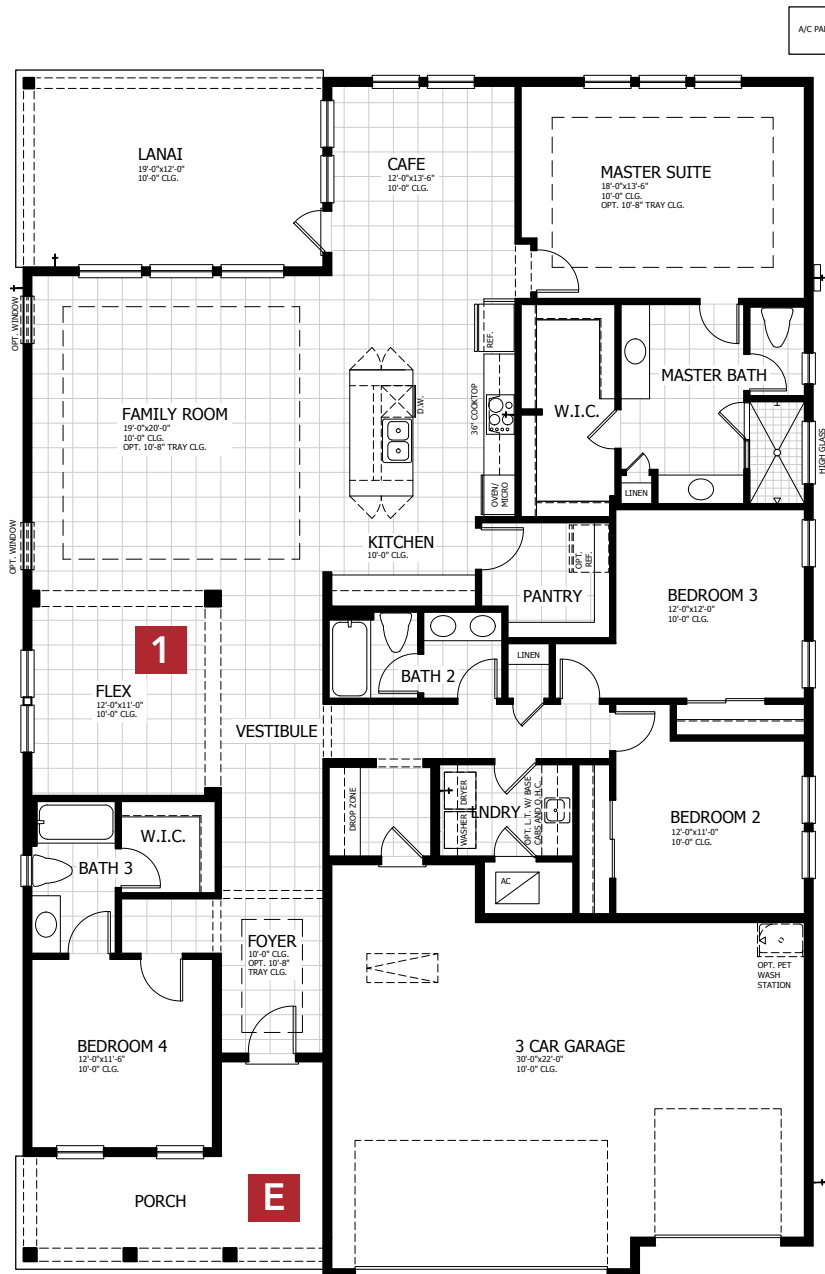
MASON CRAFTSMAN



MASON FARMHOUSE

# MASON COASTAL

## FIRST FLOOR



**4 BEDROOMS**

**3 BATHROOMS**

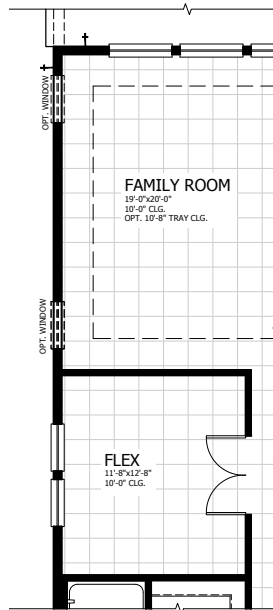
**3 CAR GARAGE**

**2,661 SQUARE FEET**

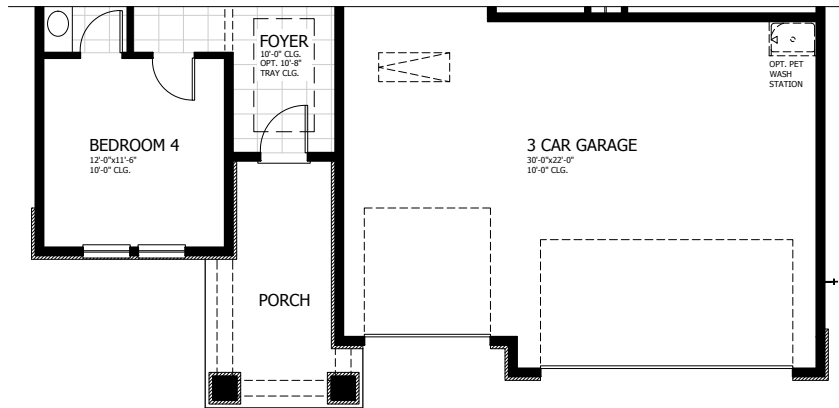
In the interest of continuous product improvements and to meet changing market conditions, MasterCraft Builder Group reserves the right to modify floor plans, exterior elevations, specifications, features, prices and product types without prior notice or obligation. Some features may vary from plan to plan. All plans, elevation renderings, and artist's conceptions are not necessarily to scale. All square footages are approximate. Window size, type and location may vary with each elevation. 02/12/2020

# MASON OPTIONS & OTHER ELEVATIONS

## 1 ENCLOSED FLEX ROOM



## E CRAFTSMAN



## E FARMHOUSE

