

NEPTUNE

VILLAGES OF VALENCIA



♦ **MASTERCRAFT.** ♦
BUILDER GROUP



COASTAL



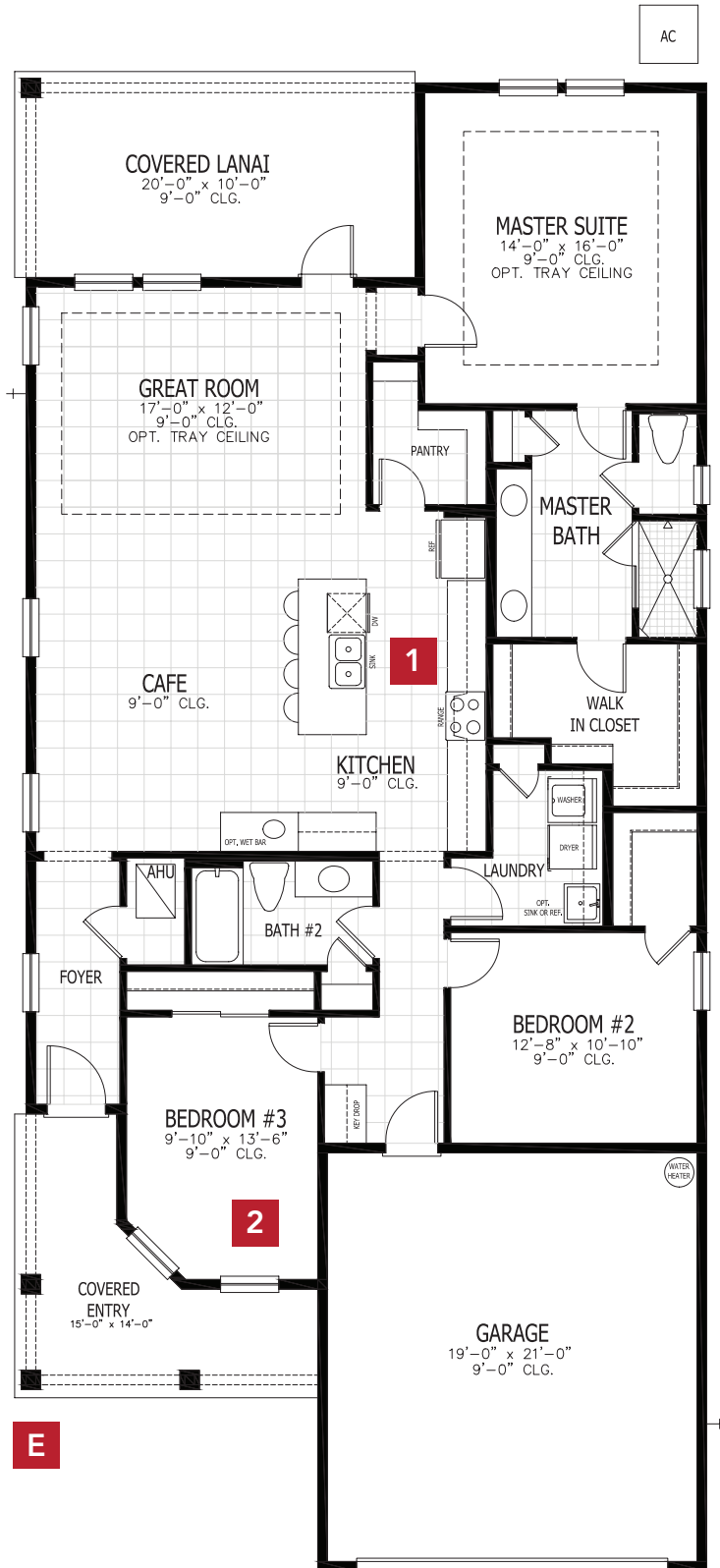
CRAFTSMAN



VICTORIAN FARMHOUSE

NEPTUNE COASTAL

FIRST FLOOR



BASE INFORMATION

3 BEDROOMS

2 BATHROOMS

2 CAR GARAGE

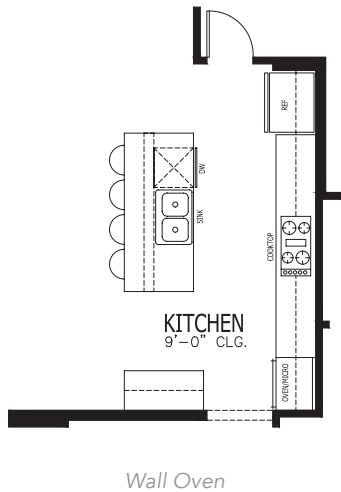
1,786 SQUARE FEET

In the interest of continuous product improvements and to meet changing market conditions, MasterCraft Builder Group reserves the right to modify floor plans, exterior elevations, specifications, features, prices and product types without prior notice or obligation. Some features may vary from plan to plan. All plans, elevation renderings, and artist's conceptions are not necessarily to scale. All square footages are approximate. Window size, type and location may vary with each elevation.

FLOOR PLAN OPTIONS

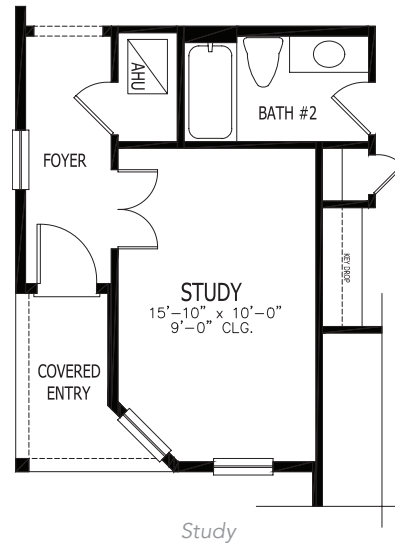
1

GOURMET KITCHEN



2

THIRD BEDROOM/STUDY



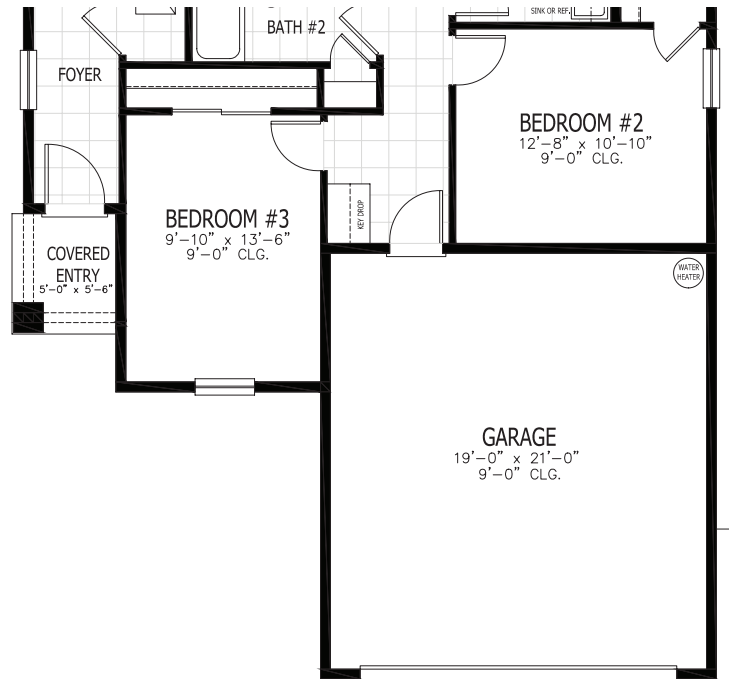
B U I L T B Y C R A F T S M A N

FINISHED BY YOU

As a homebuilder and developer with higher standards, our homes and communities are thoughtfully designed and tailored to meet the needs of our future residents in both comfort and enjoyment. Our floor plans have pre-designed structural options in order to easily allow you the flexibility to personalize your home to suit your lifestyle—not our logistics. Please contact us today to discuss your particular needs.

OTHER ELEVATIONS

E CRAFTSMAN



E VICTORIAN FARMHOUSE

