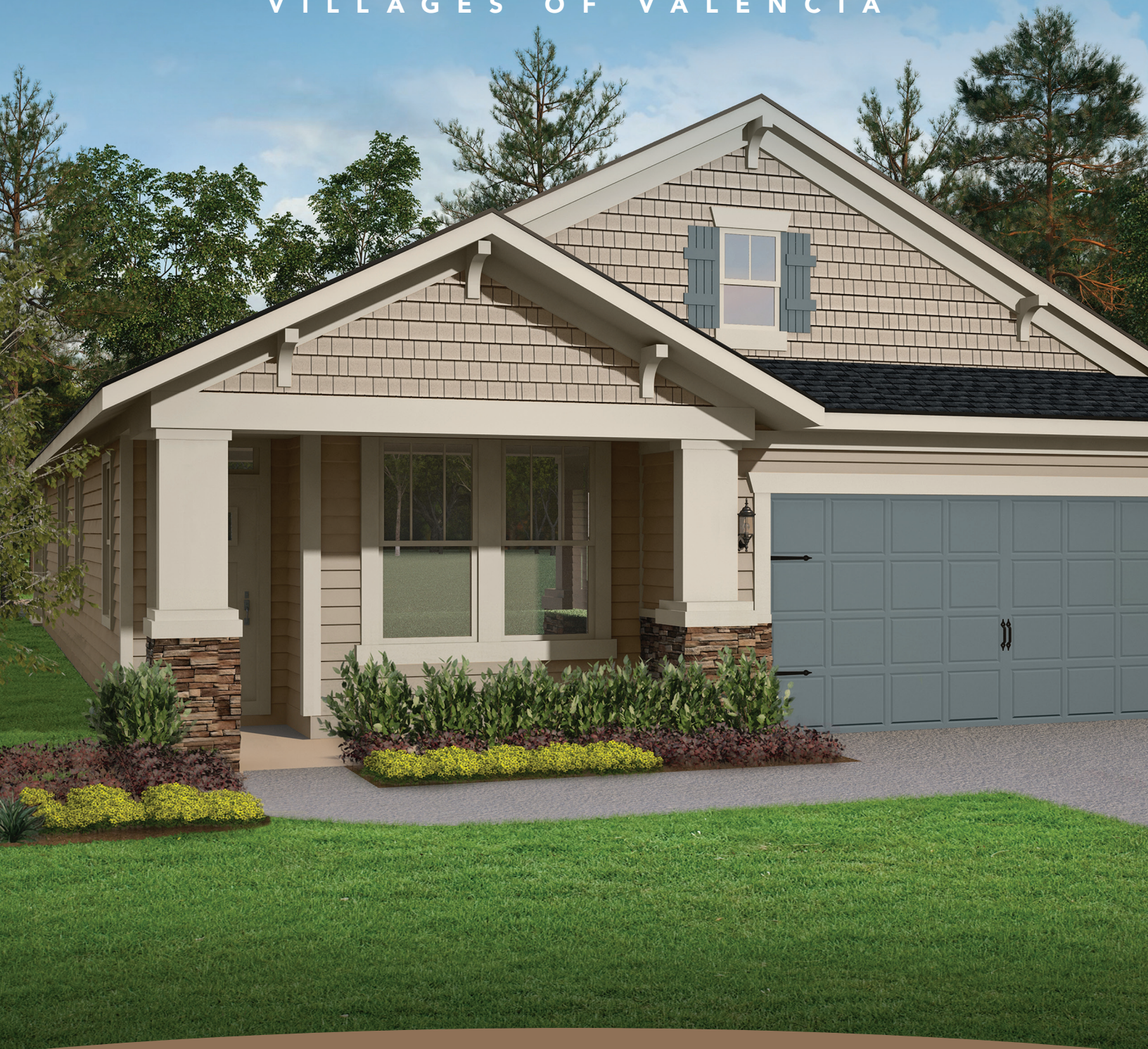


VILANO

VILLAGES OF VALENCIA



♦ **MASTERCRAFT.** ♦
BUILDER GROUP



COASTAL



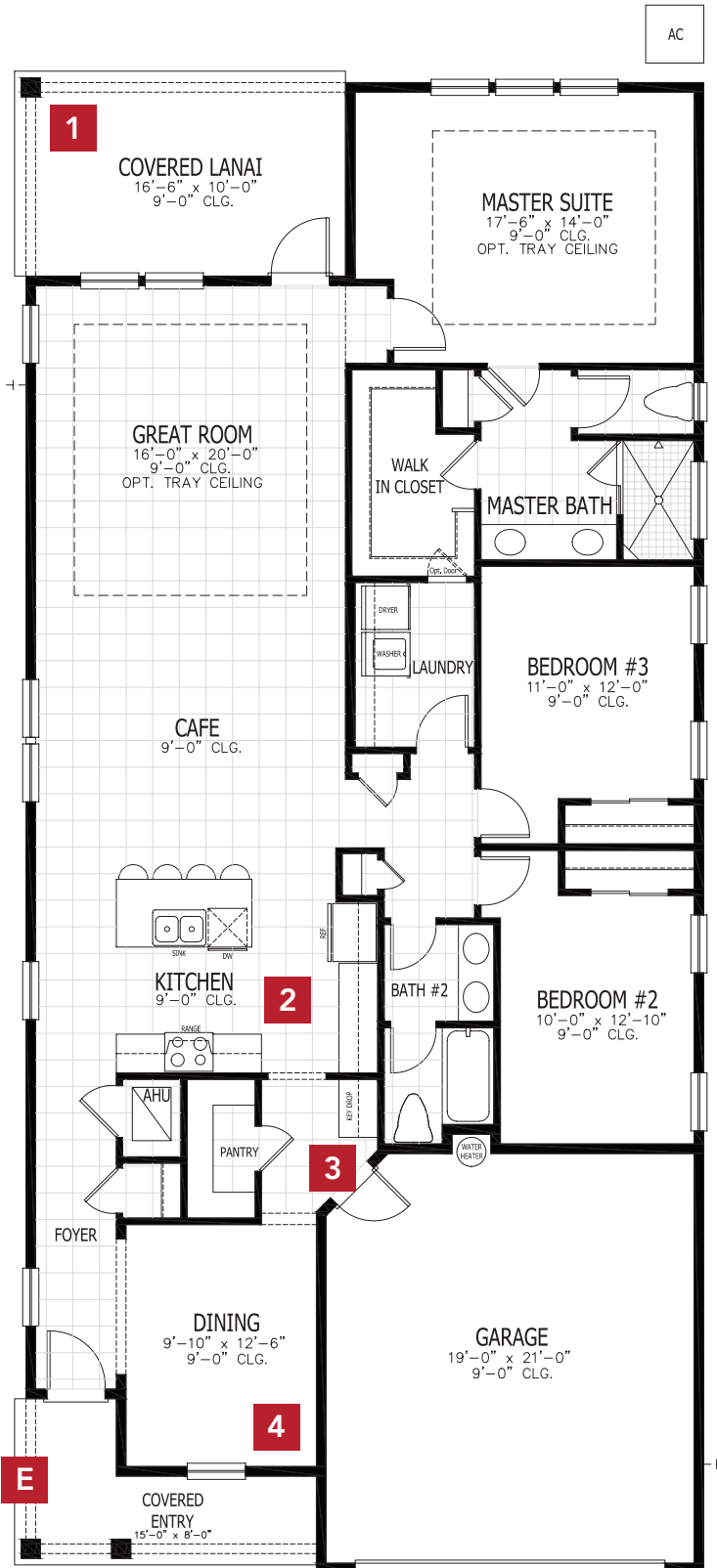
CRAFTSMAN



VICTORIAN FARMHOUSE

VILANO COASTAL

FIRST FLOOR



BASE INFORMATION

3 BEDROOMS

2 BATHROOMS

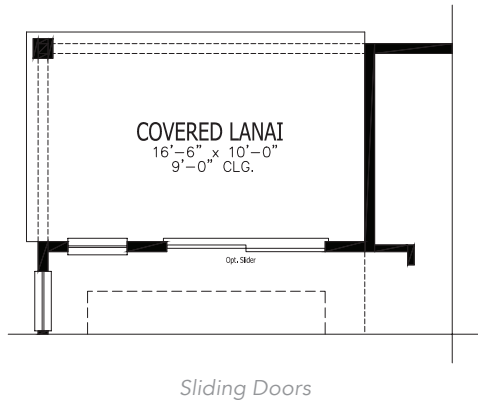
2 CAR GARAGE

2,016 SQUARE FEET

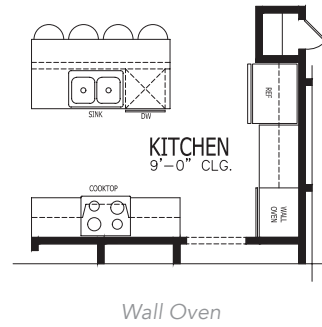
In the interest of continuous product improvements and to meet changing market conditions, MasterCraft Builder Group reserves the right to modify floor plans, exterior elevations, specifications, features, prices and product types without prior notice or obligation. Some features may vary from plan to plan. All plans, elevation renderings, and artist's conceptions are not necessarily to scale. All square footages are approximate. Window size, type and location may vary with each elevation.

FLOOR PLAN OPTIONS

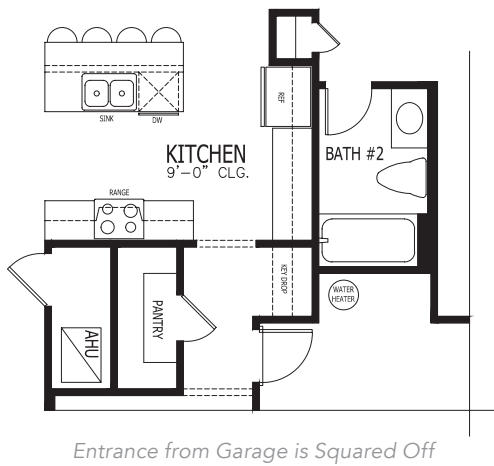
1 COVERED LANAI



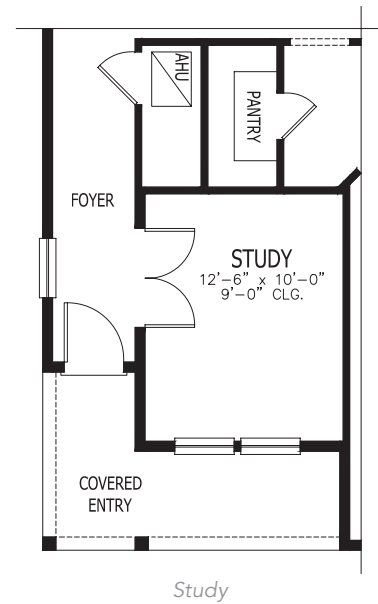
2 GOURMET KITCHEN



3 GARAGE ENTRANCE

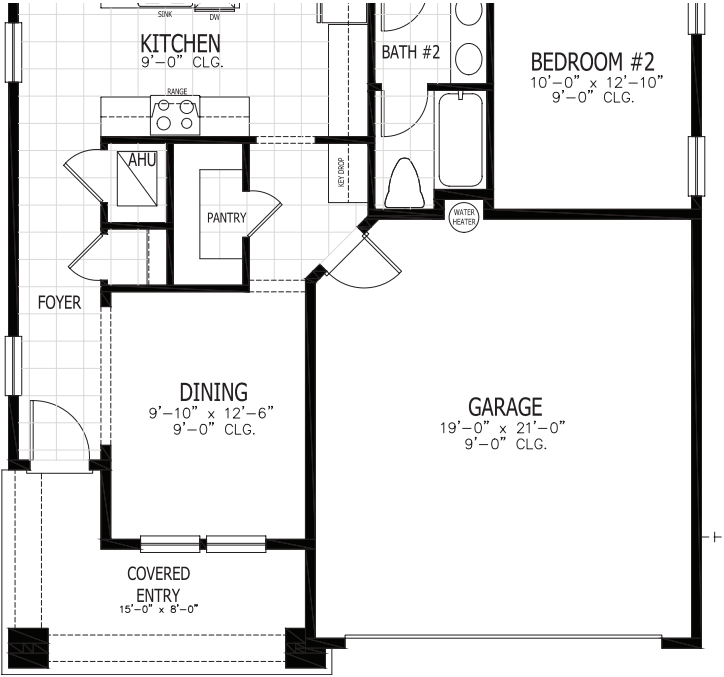


4 DINING/STUDY



OTHER ELEVATIONS

E CRAFTSMAN



E VICTORIAN FARMHOUSE

