

COQUINA



◆ **MASTERCRAFT.** ◆
BUILDER GROUP

COQUINA



COASTAL



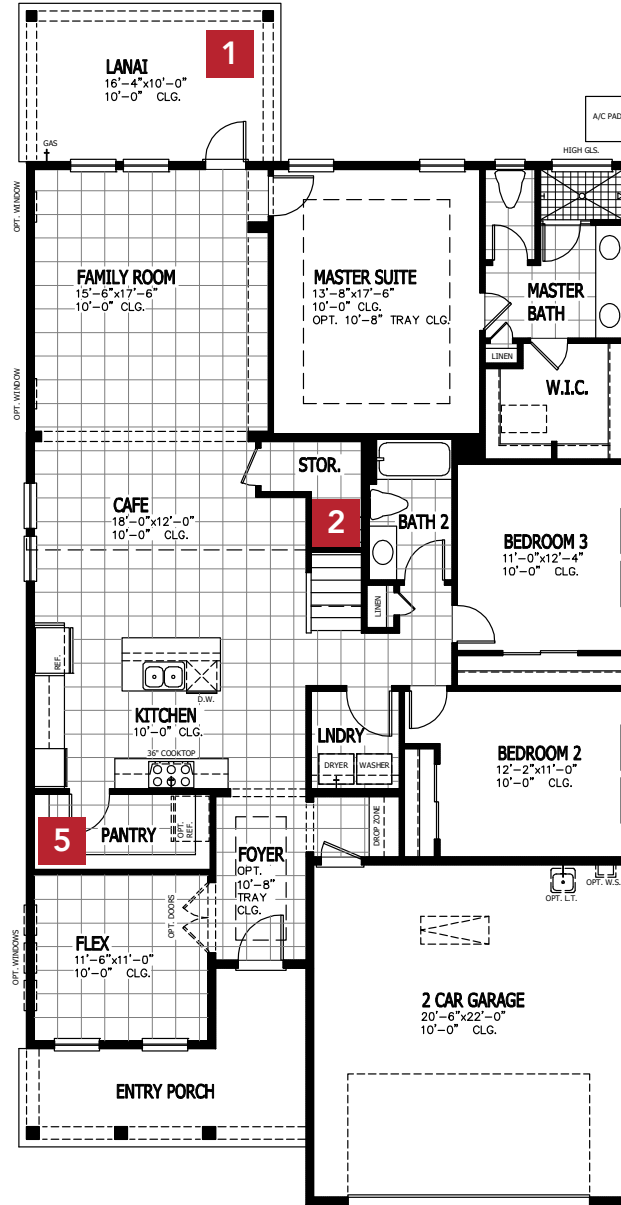
CRAFTSMAN



FARMHOUSE

COQUINA COASTAL

FIRST FLOOR



3 BEDROOMS

2-3 BATHROOMS

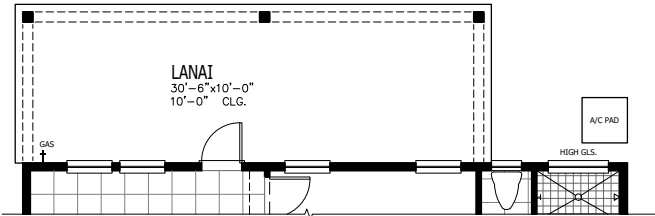
2 CAR GARAGE

2057-2480 SQUARE FEET

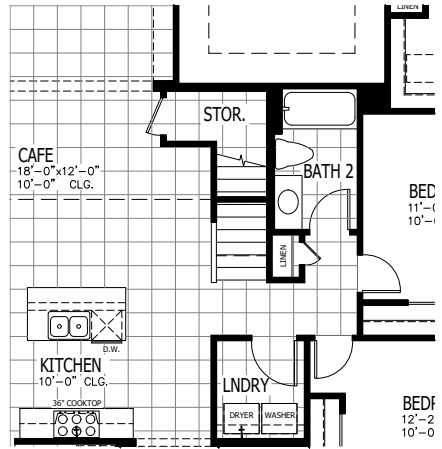
In the interest of continuous product improvements and to meet changing market conditions, MasterCraft Builder Group reserves the right to modify floor plans, exterior elevations, specifications, features, prices and product types without prior notice or obligation. Some features may vary from plan to plan. All plans, elevation renderings, and artist's conceptions are not necessarily to scale. All square footages are approximate. Window size, type and location may vary with each elevation. 02/26/2025

COQUINA FLOOR PLAN OPTIONS

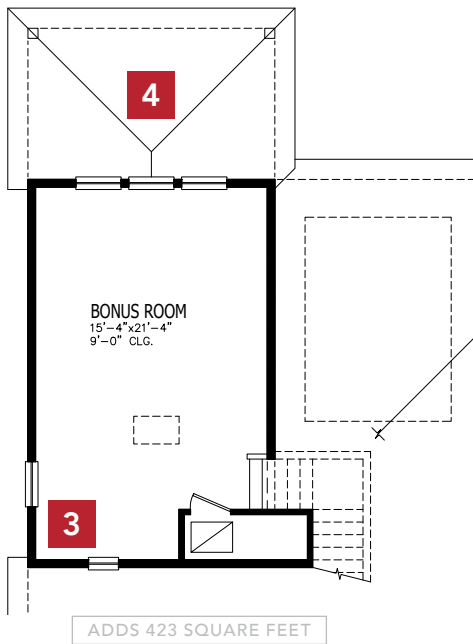
1 EXTENDED LANAI



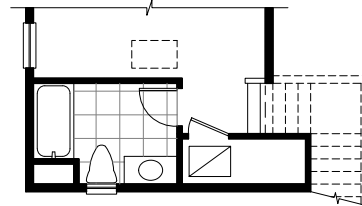
2 FIRST FLOOR STAIRS WITH BONUS ROOM



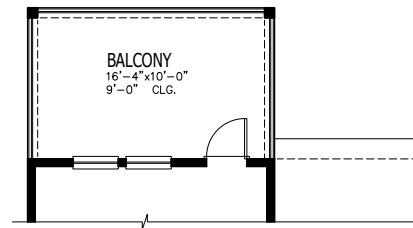
2 SECOND FLOOR BONUS ROOM



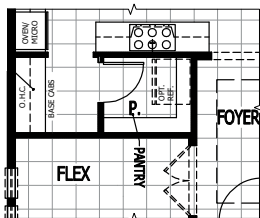
3 BATHROOM WITH BONUS ROOM



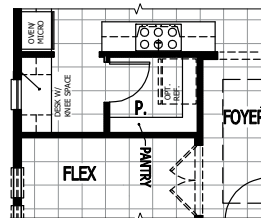
4 UPSTAIRS BALCONY WITH BONUS ROOM



5 BUTLER PANTRY

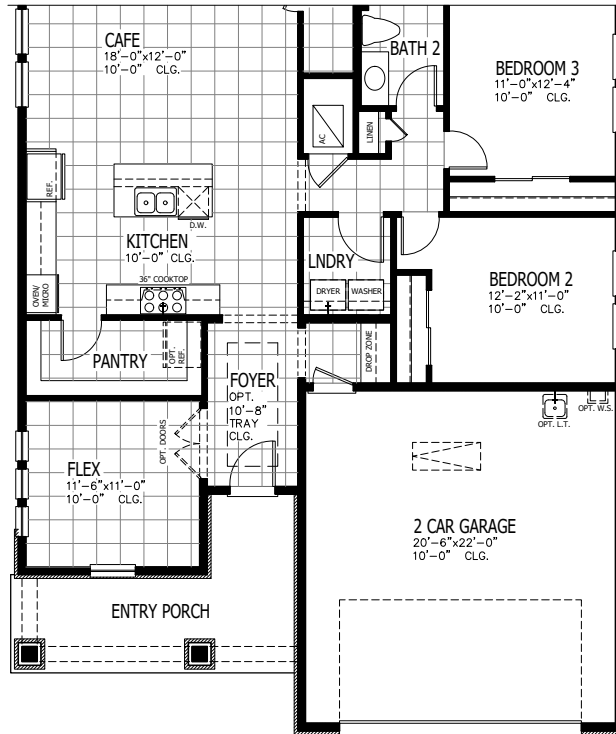


5 POCKET OFFICE



COQUINA OTHER ELEVATIONS

E CRAFTSMAN



E FARMHOUSE

