

# COQUINA



◆ **MASTERCRAFT.** ◆  
BUILDER GROUP

# COQUINA



COASTAL



CRAFTSMAN



FARMHOUSE

# COQUINA COASTAL

## FIRST FLOOR



**E**

**3 BEDROOMS**

**2-3 BATHROOMS**

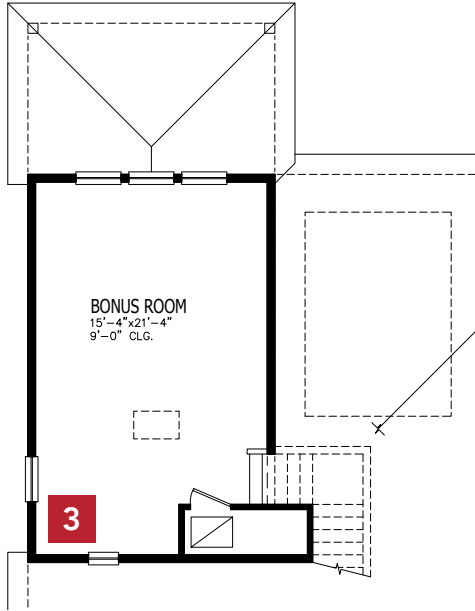
**2 CAR GARAGE**

**2057-2480 SQUARE FEET**

In the interest of continuous product improvements and to meet changing market conditions, MasterCraft Builder Group reserves the right to modify floor plans, exterior elevations, specifications, features, prices and product types without prior notice or obligation. Some features may vary from plan to plan. All plans, elevation renderings, and artist's conceptions are not necessarily to scale. All square footages are approximate. Window size, type and location may vary with each elevation. 11/20/2024

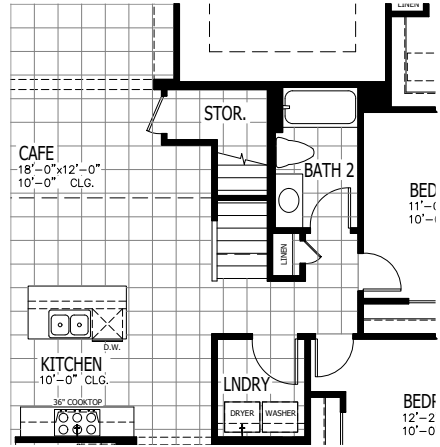
# COQUINA FLOOR PLAN OPTIONS

## 1 BONUS ROOM

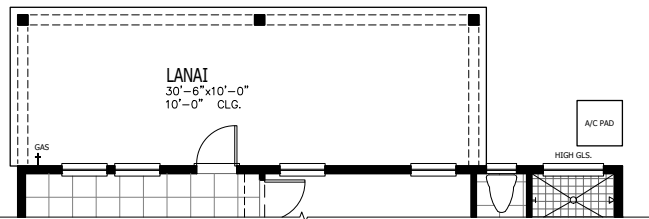


ADDS 423 SQUARE FEET

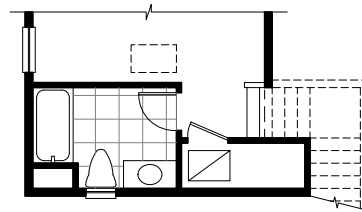
## 1 FIRST FLOOR STAIRS WITH BONUS ROOM



## 2 EXTENDED LANAI

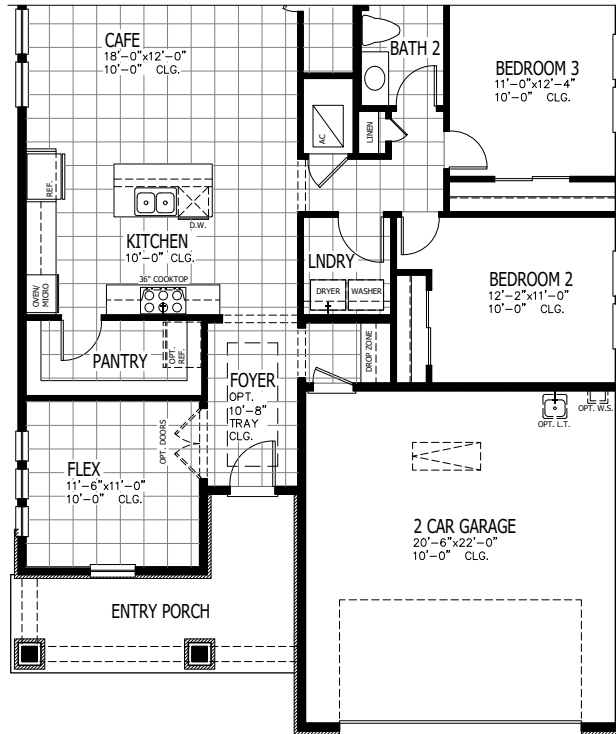


## 3 OPTIONAL BATHROOM WITH BONUS ROOM



# COQUINA OTHER ELEVATIONS

## E CRAFTSMAN



## E FARMHOUSE

